

AERMEC



air conditioning



Fan Coils & Accessories



THE WORLD'S QUIETEST FAN COILS

The Affordable **GREEN** Solution

- ✓ Efficiency
- ✓ Comfort
- ✓ Reduce carbon footprint, save energy,
- ✓ Reduced operating costs
- ✓ No refrigeration in the building
- ✓ Unmatched zoning capabilities
- ✓ Whisper quiet operation
- ✓ Environmentally friendly
- ✓ Simple, reliable and proven worldwide



The World's Quietest Fan Coils

Available in 8 sizes and 2 versions:

FCX US • FCX USP

- 3-speed fan unit
- Full compliance with safety regulations
- Soft, flowing lines
- Automatic power-off function with closure of the air delivery louver
- Broad range of controls
- Metallic protective cabinet with rustproof polyester paint
- Low noise operation
- Reduced pressure drops across heat exchangers
- Motors with permanently connected condensers
- Easy installation and maintenance
- Air filter easily removed and cleaned
- Removable blades for easy and effective cleaning
- Water connections reversibility during installation



AERMEC

The Affordable Green Solution
www.aermec.us • www.aermec.ca

fcx us

■ = Cooling - ■ = Heating

Model FCX		22 US	32 US	42 US	50 US	62 US	82 US	102 US
Heating capacity	Btu/h (max.)	8860	12950	19260	22430	33640	39410	44310
	Btu/h (med.)	7030	10650	16700	19600	28490	34750	39680
	Btu/h (min.)	4980	8800	13320	14110	21680	28050	32710
Heating capacity	Watts (max.)	2595	3795	5645	6575	9860	11550	12985
	Watts (med.)	2060	3120	4895	5745	8350	10185	11630
	Watts (min.)	1460	2580	3905	4135	6355	8220	9585
Water flow rate	gpm	0.99	1.58	2.23	2.75	3.19	4.54	5.01
Water pressure drops	ft. WC	1.14	3.25	2.80	3.78	2.27	2.65	3.76
Total cooling capacity	Btu/h (max.)	4980	7950	11260	13890	16110	22890	25250
	Btu/h (med.)	4400	6810	9280	12060	15440	18220	23660
	Btu/h (min.)	3500	5210	7660	9420	13090	15610	20780
Total cooling capacity	Watts (max.)	1460	2330	3300	4070	4720	6710	7400
	Watts (med.)	1290	1995	2720	3535	4525	5340	6935
	Watts (min.)	1025	1525	2245	2760	3835	4575	6090
Sensible cooling capacity	Btu/h (max.)	3690	5890	8330	10270	11920	16940	18660
	Btu/h (med.)	3260	5030	6870	8920	11430	13480	17500
	Btu/h (min.)	2590	3860	5670	6960	9690	11550	15370
Water flow rate	gpm	0.99	1.58	2.23	2.75	3.19	4.54	5.01
Water pressure drop	ft.W.C.	1.46	4.17	3.59	4.85	2.91	3.39	4.82
Air flow rate	cfm (max.)	170	265	355	425	540	670	765
	cfm (med.)	130	205	270	355	425	550	660
	cfm (min.)	80	155	195	235	305	410	530
Fans	no.	1	2	2	2	3	3	3
	dB (A) (max.)	39.5	38.5	42.5	47.5	47.0	52.5	56.5
	dB (A) (med.)	33.0	32.5	35.5	42.5	40.5	47.5	52.5
Sound pressure	dB (A) (min.)	23.0	25.5	28.5	33.5	31.5	42.5	46.5
	dB (A) (max.)	48.0	48.0	51.0	56.0	55.5	61.0	65.0
	dB (A) (med.)	41.5	41.0	44.0	51.0	49.0	56.0	61.0
Sound power	dB (A) (min.)	31.5	34.0	37.0	42.0	40.0	51.0	55.0
	gal	0.21	0.29	0.39	0.39	0.67	0.67	0.67
Water contents	gal	0.21	0.29	0.39	0.39	0.67	0.67	0.67
Max. motor power	Watts	25	44	57	67	82	106	131
Max. input current	Amps	0.24	0.42	0.56	0.70	0.80	0.98	1.16
Coil connections 3R	ø FPT	1/2"	1/2"	3/4"	3/4"	3/4"	3/4"	3/4"
Coil connections 1R	ø FPT	1/2"	1/2"	1/2"	1/2"	1/2"	1/2"	1/2"

Power supply = 115 V - 1 - 60Hz.

Performance values refer to the following conditions:

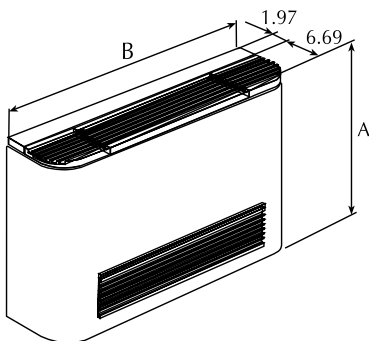
♪ Sound pressure measured in an 3000 cu ft semi-reverberant test chamber with reverberation time $T_r = 0.5s$.

Cooling:

- room air temperature 80 °F (26.7 °C) D.B., 67 °F (19.4 °C) W.B.;
- water inlet temperature 45 °F (7.2 °C); max. speed;
- water Δt 10 °F; (-12°C)
- for medium and low speed, water flow rate remains same as at maximum speed.

Heating:

- room air temperature 70 °F (21.1 °C); R.H. 50%;
- water inlet temperature 140 °F (60 °C); maximum speed;
- water Δt 10 °F; (-12°C)
- for medium and low speed, water flow rate remains same as at maximum speed.



Dimensions (inches)

Model FCX		22 US	32 US	42 US	50 US	62 US	82 US	102 US
Height	A	19.18	19.18	19.18	19.18	23.24	23.24	23.24
Width	B	29.55	32.61	47.28	47.28	52.0	52.0	52.0
Weight	lbs	33.0	44.0	52.8	52.8	74.8	74.8	74.8

AERMEC

The Affordable Green Solution
www.aermec.us · www.aermec.ca

fcx usp

■ = Cooling - ■ = Heating

Mod.	FCX USP	22	24	32	34	42	44	50	54	62	64	82	84	102
Heating capacity	Btu/h (max.)	8860	10290	12950	15235	19260	22380	22430	26290	33640	37225	39410	44530	44310
	Btu/h (med.)	7030	8325	10650	12625	16700	18050	19600	22810	28490	29955	34750	37535	39680
	Btu/h (min.)	4980	5730	8800	10030	13320	13545	14110	16240	21680	22140	28050	29170	32710
Heating capacity	Watts (max.)	2595	3015	3795	4465	5645	6560	6575	7705	9860	10910	11550	13050	12985
	Watts (med.)	2060	2440	3120	3700	4895	5290	5745	6685	8350	8780	10185	11000	11630
	Watts (min.)	1460	1680	2580	2940	3905	3970	4135	4760	6355	6490	8220	8550	9585
Water flow rate	gpm	0.99	1.13	1.58	1.84	2.23	2.92	2.75	3.48	3.19	4.17	4.54	5.65	5.01
Water pressure drops	ft. W.C.	1.14	0.59	3.25	1.76	2.80	5.10	3.78	6.86	2.27	4.51	2.65	4.70	3.76
Total cooling capacity	Btu/h (max.)	4980	5715	7950	9280	11260	14740	13890	17555	16110	21035	22890	28490	25250
	Btu/h (med.)	4400	4965	6810	8120	9280	12525	12060	15795	15440	18290	18220	25180	23660
	Btu/h (min.)	3500	3805	5210	6790	7660	9845	9420	11995	13090	14910	15610	20780	20780
Total cooling capacity	Watts (max.)	1460	1675	2330	2720	3300	4320	4070	5145	4720	6165	6710	8350	7400
	Watts (med.)	1290	1455	1995	2380	2720	3670	3535	4630	4525	5360	5340	7380	6935
	Watts (min.)	1025	1115	1525	1990	2245	2885	2760	3515	3835	4370	4575	6090	6090
Sensible cooling capacity	Btu/h (max.)	3690	4235	5890	6875	8330	10900	10270	12990	11920	15560	16940	21085	18680
	Btu/h (med.)	3260	3670	5030	6005	6870	9265	8920	11690	11430	13530	13480	18630	17500
	Btu/h (min.)	2590	2815	3860	5015	5670	7285	6960	8875	9690	11040	11550	15370	15370
Water flow rate	gpm	0.99	1.13	1.58	1.84	2.23	2.92	2.75	3.48	3.19	4.17	4.54	5.65	5.01
Water pressure drops	ft.W.C.	1.46	0.75	4.17	2.26	3.59	6.53	4.85	8.79	2.91	5.78	3.39	6.03	4.82
Air flow rate	cfm (max.)	170	170	265	265	355	355	425	425	540	540	670	670	765
	cfm (med.)	130	130	205	208	270	270	355	355	425	425	550	550	660
	cfm (min.)	80	80	155	155	195	195	235	235	305	305	410	410	530
Fans	no.	1	1	2	2	2	2	2	2	3	3	3	3	3
Sound pressure	dB (A) (max.)	39.5	41.5	38.5	39.5	42.5	42.5	47.5	47.5	47.0	48.5	52.5	52.5	56.5
	dB (A) (med.)	33.0	34.5	32.5	32.5	35.5	35.5	42.5	42.5	40.5	42.5	47.5	47.5	52.5
	dB (A) (min.)	23.0	22.5	25.5	25.5	28.5	28.5	33.5	33.5	31.5	33.5	42.5	42.5	46.5
Sound pressure FCX PO	dB (A) (max.)	-	49.5	-	44.0	-	50.0	-	50.5	-	53.5	-	55.5	-
Sound power FCX PO	dB (A) (max.)	-	58.0	-	52.5	-	58.5	-	59.0	-	62.0	-	64.0	-
Sound power	dB (A) (max.)	48.0	50.0	48.0	48.0	51.0	51.0	56.0	56.0	55.5	57.0	61.0	61.0	65.0
	dB (A) (med.)	41.5	43.0	41.0	41.0	44.0	44.0	51.0	51.0	49.0	51.0	56.0	56.0	61.0
	dB (A) (min.)	31.5	31.0	34.0	34.0	37.0	37.0	42.0	42.0	40.0	42.0	51.0	51.0	55.0
Water contents	gal	0.21	0.26	0.29	0.40	0.39	0.50	0.39	0.50	0.67	0.90	0.67	0.90	0.67
Max. motor power	Watts	25	54	44	97	57	111	67	82	82	97	106	135	131
Max. input current	Amps	0.24	0.50	0.42	0.90	0.56	1.02	0.70	0.72	0.80	0.96	0.98	1.24	1.16
Coil connections (FPT)	ø (4R)	-	3/4"	-	3/4"	-	3/4"	-	3/4"	-	3/4"	-	3/4"	-
	ø (3R)	1/2"	-	1/2"	-	3/4"	-	3/4"	-	3/4"	-	3/4"	-	3/4"
	ø (1R)	1/2"	-	1/2"	-	1/2"	-	1/2"	-	1/2"	-	1/2"	-	1/2"

Power supply = 115 V - 1 - 60Hz.

Performance values refer to the following conditions:

♪ Sound pressure measured in an 3000 cu ft semi-reverberant test chamber with reverberation time $T_r = 0.5s$.

Cooling:

- room air temperature 80 °F (26.7 °C) D.B., 67 °F (19.4 °C) W.B.;
- water inlet temperature 45 °F (7.2 °C); max. speed;
- water Dt 10 °F; (-12°C)
- for medium and low speed, water flow rate remains same as at maximum speed.

Heating:

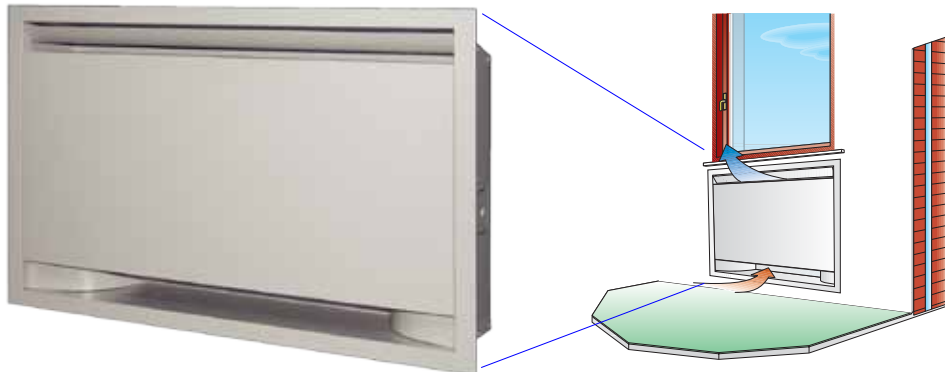
- room air temperature 70 °F (21.1 °C); R.H. 50%;
- water inlet temperature 140 °F (60 °C); maximum speed;
- water Dt 10 °F; (-12°C)
- for medium and low speed, water flow rate remains same as at maximum speed.

AERMEC

The Affordable Green Solution
www.aermec.us · www.aermec.ca

Ventilcassaforma

VentilCassaforma has been designed to respond to the needs to rationalise spaces to suit modern interior architecture. VentilCassaforma is a galvanised template that makes it possible to make a space to house fan coils **in the wall**.



Whisper Quiet Comfort.

Dimensions (inches)

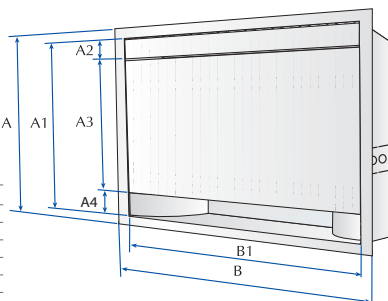
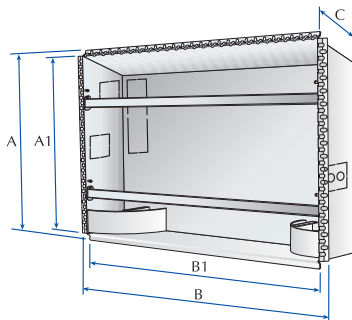
CHU		12 L	17 L	27 L	37 L
Height	A	27.2"	27.2"	27.2"	27.2"
	A1	25.5"	25.5"	25.5"	25.5"
Width	B	27.24"	31.6"	40.62"	49.29"
	B1	25.35"	29.7"	38.74"	47.4"
Depth	C	7.3"	7.3"	7.3"	7.3"

CHF		17	22	32	42	62
Height	A	28.66"	28.66"	28.66"	28.66"	32.79"
	A1	26.92"	26.92"	26.92"	26.92"	31.06"
Width	B	28.81"	33.15"	42.24"	50.90"	55.67"
	B1	26.93"	31.26"	40.35"	49.02"	53.78"
Depth	C	9.45"	9.45"	9.45"	9.45"	9.45"

Outer frame and closure panel

CHU		12 L	17 L	27 L	37 L
Height	A	28.5"	28.5"	28.5"	28.5"
	A1	25"	25"	25"	25"
	A2	2.75"	2.75"	2.75"	2.75"
	A3	19.45"	19.45"	19.45"	19.45"
Width	B	28.07"	32.4"	41.46"	50.11"
	B1	24.92"	29.25"	38.30"	47"

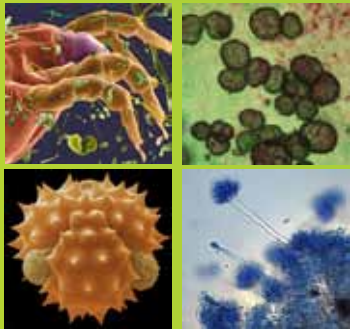
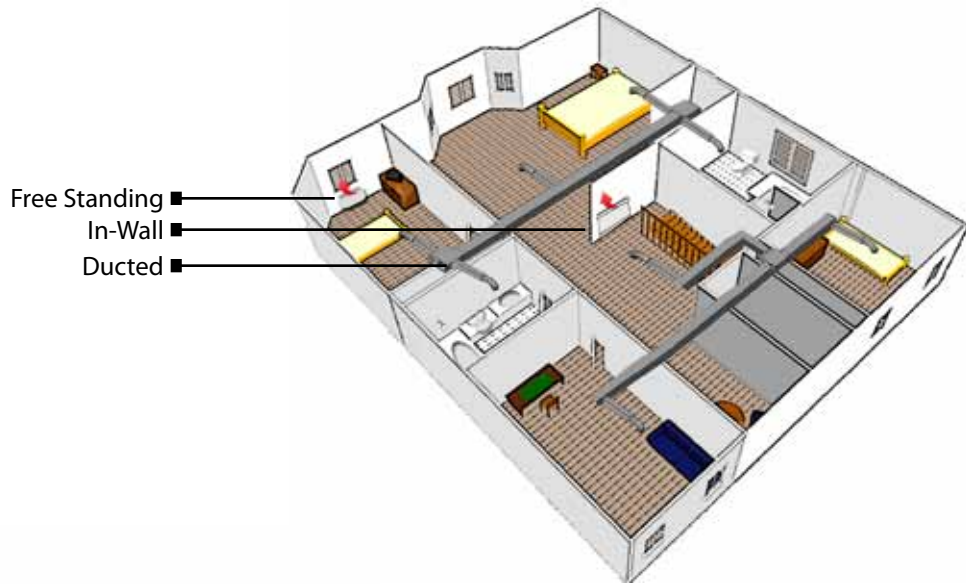
CHF		17	22	32	42	62
Height	A	29.92"	29.92"	29.92"	29.92"	34.1"
	A1	26.77"	26.77"	26.77"	26.77"	30.91"
	A2	3.66"	3.66"	3.66"	3.66"	3.66"
	A3	19.41"	19.41"	19.41"	19.41"	23.54"
	A4	3.7"	3.7"	3.7"	3.7"	3.7"
Width	B	29.65"	34"	43.07"	51.73"	56.5"
	B1	26.5"	30.83"	39.92"	48.6"	53.35"



AERMEC

The Affordable Green Solution
www.aermec.us · www.aermec.ca

Flexible Applications



UV Light Technology: Improving Indoor Air Quality

The Aermec Fan Coils can be equipped with a state of the art UV tube which improves indoor air quality by killing off air born dust mites, pollen mold and bacteria, which are harmful to our bodies.

Thermostats

FMT 10

The FMT 10 Control Panel for FCX US series fancoils can be installed on board the conditioning unit. The assembly kit consists of the panel, the panel bracket for on-board assembly and electrical connectors. Each panel controls a single fancoil.

The control panel includes:

- On/Off switch;
- 3-speed fan operation selector



FMT 20

The FMT 20 digital thermostat with basic functions, is a control panel for remote control of the FCX US series fancoils. The panel consists of an electronic thermostat that orders fan operation cut-out when the set ambient temperature has been reached. Each panel controls a single fancoil.

The control panel includes:

- Digital Display
- On/Off switch;
- 3-speed fan operation selector
- Thermostat F/C;
- Summer/Winter operation switch.



AERMEC

The Affordable Green Solution
www.aermec.us · www.aermec.ca

AERMEC



air conditioning



AIRCONDITIONING INC.

H.V.A.C. DISTRIBUTOR

www.mitsair.com

1800 Meyerside Drive, Mississauga, Ontario L5T 1B4
Tel: 905-564-2221 • 1-800-567-2221 • Fax: 905-564-2205

AERMEC

The Affordable Green Solution
www.aermec.us • www.aermec.ca