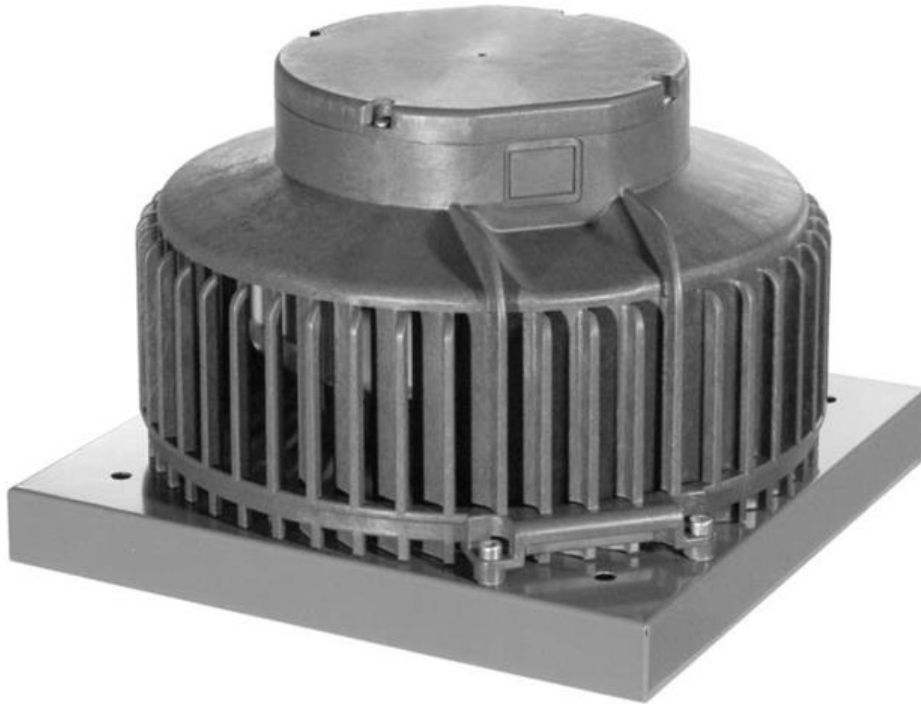


HORIZONTAL DISCHARGE ROOF EXHAUST FAN

Rev.01
27-05-2015



GMC REF-541:

Roof unit horizontal outlet

Application

- These fans are designed for direct or ducted ventilation in residential, commercial and industrial buildings
- The range comprise 4 sizes with air volumes up to 1200 m³/h

Composition

- The plastic (ASA) RAL 7012 housing is made like a bird and finger guard
- Frame made of galvanized sheet steel powder coated with threaded pins for connection of flanges
- The motor has an integrated motor protection and is speed controllable
- Maintenance-free, long-life ball bearings
- Impeller dynamically balanced in two levels class G6.3 according to DIN ISO 1940
- Supply: 230Vac 1ph
- Motor: Insulation class F – Protection class IP33
- Noise power level measured in a anechoic chamber to DIN 45635 – part 2
- Noise pressure level measured to DIN 45635 – part 38:
 1. L_{wa,2} breakout sound level
 2. L_{wa,5} inlet sound level
 3. L_{wa,6} outlet sound level

Ancillaries

- Transformer speed controllers type **BTRN**
- Acoustic roof socket **RAC-I**
- Roof socket **RC-I**
- Flexible connector **RFC**
- Matching flange **RIF**
- Backdraught shutter **RAS**



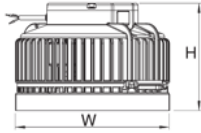
HORIZONTAL DISCHARGE ROOF EXHAUST FAN

Rev.01
27-05-2015



Air performance data

Mk.	Model	Qv (m ³ /h)					
		50 Pa	100 Pa	150 Pa	200 Pa	250 Pa	300 Pa
	190 E2 01	400	330	250	150	50	-
	220 E2 01	840	770	680	570	440	320
	250 E2 01	1295	1220	1140	1050	930	780
	250 E4 01	600	400	65	-	-	-



Dimensions

Mk.	Model	W (mm)	H (mm)
		190 E2 01	321
	220 E2 01	321	221
	250 E2 01	321	221
	250 E4 01	321	221