

FAN-COIL UNITS

Rev.02
27-05-2015



GMC FCU-097 PRODUCTS SPECIFICATIONS:

- Ability to orientate air by plastic (ABS) louvers.
- Electrostatic powder coated finish decorative exterior housing.
- Three speed levels, direct coupled, double-suction type centrifugal fan - motor group.
- High efficient coil and rubber-based interior isolation.
- Command system with a thermostat mountable onto wall or device.
- Washable and easily detachable G2 filter.
- Quiet and safe running ability, easy servicing, maintenance and mounting.
- Has 8 main models:
 - FCU-197 : Floor Type – Cassette Fan Coil Unit
 - FCU-297/397 : Floor Type – Hidden Fan Coil Unit
 - FCU-497 : Ceiling Type – Cassette Fan Coil Unit
 - FCU-597 : Ceiling Type – Hidden Fan Coil Unit
 - FCU-697 : Ceiling Type – High Pressure Fan Coil Unit
 - FCU-797 : Trench Heater – Fan Coil Unit
 - FCU-897 : Ceiling Type – 4Ways Cassette Fan Coil Unit



HVAC Systems and Equipments Co.
4640 Hedgoxe Road 227 Plano, TX 75024 – US

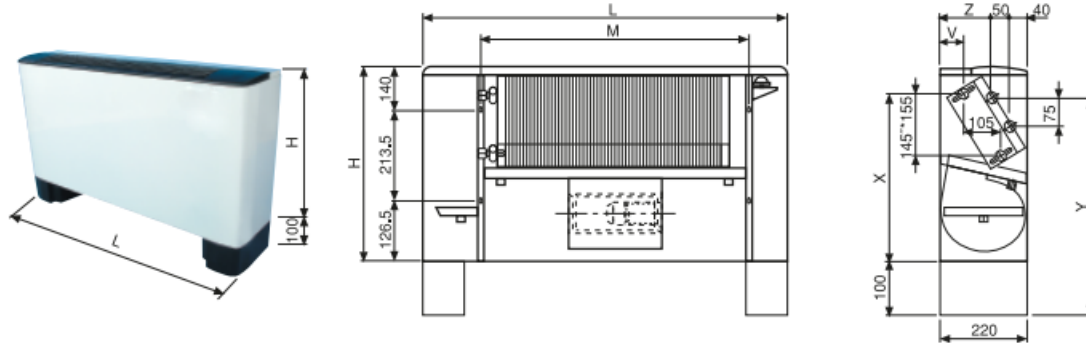
www.gmcair.com 

FAN-COIL UNITS

Rev.02
27-05-2015



FC-197: FLOOR TYPE - CASSETTE FAN COIL UNIT



Model		FCU-197-FC1	FCU-197-FC2	FCU-197-FC3	FCU-197-FC4	FCU-197-FC5	FCU-197-FC6	FCU-197-FC7		
Fan		1	1	1	1	1	2	2		
Battery Lines		3	3	3	3	3	3	3		
Water Inlet/Outlet		ø 1/2"	ø 1/2"	ø 1/2"	ø 1/2"	ø 1/2"	ø 3/4"	ø 3/4"		
Additional Battery Water Inlet/Outlet		1	1	1	1	1	1	1		
Dimensions	X (mm)	405	405	405	405	405	400	400		
	Y (mm)	405	405	405	405	405	405	405		
	V (mm)	55	55	55	55	55	55	55		
	Z (mm)	130	130	130	130	130	130	130		
	H	480	480	480	480	480	480	480		
	L	760	960	960	1260	1260	1460	1460		
	M	536	736	736	1036	1036	1236	1236		
Net Weight		Kg		16	17	17	22	22	27	27

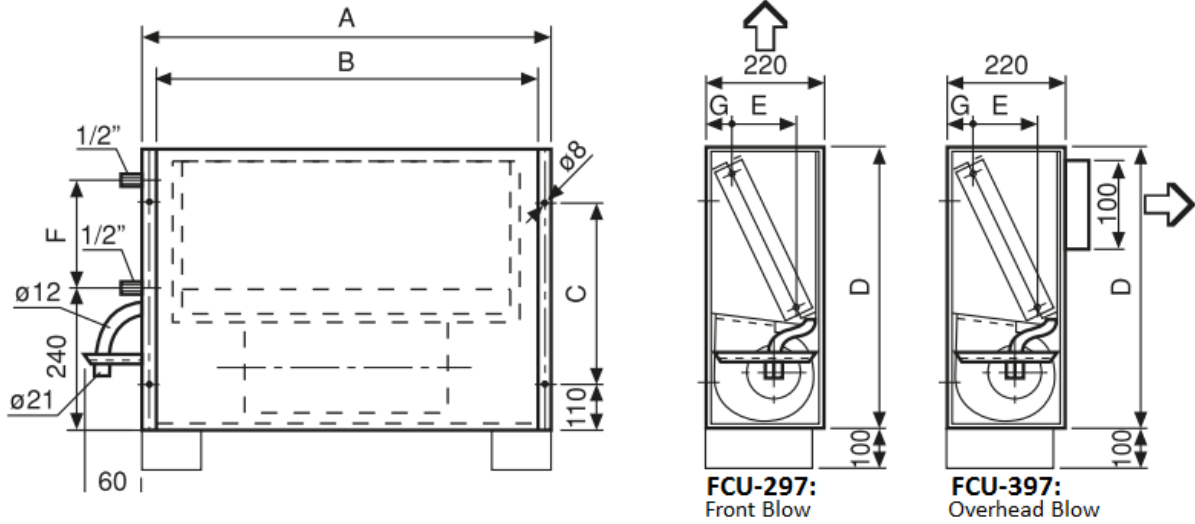


FAN-COIL UNITS

Rev.02
27-05-2015



FCU-297/397: FLOOR TYPE - HIDDEN FAN COIL UNIT



MODEL	A	B	C	D	E	F	G
FCU-297/397-FH1	540	510	213	460	105	145	55
FCU-297/397-FH2	740	710					
FCU-297/397-FH3							
FCU-297/397-FH4	1040	1010					
FCU-297/397-FH5	1240	1210					
FCU-297/397-FH6							
FCU-297/397-FH7							

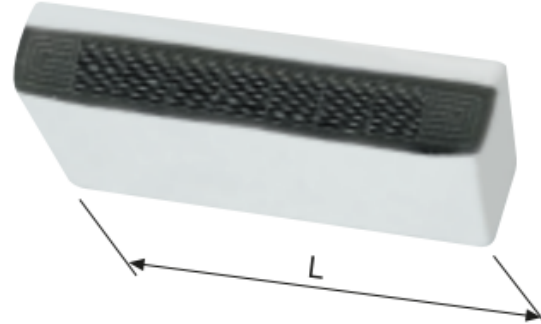
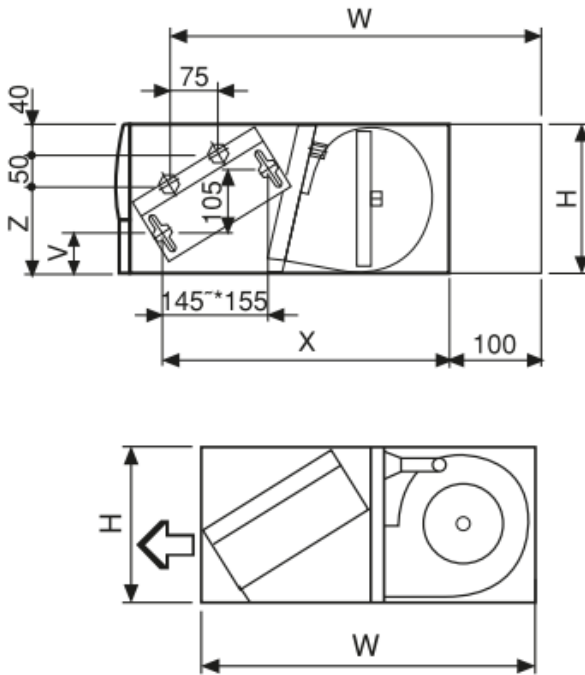


FAN-COIL UNITS

Rev.02
27-05-2015



FCU-497: CEILING TYPE - CASSETTE FAN COIL UNIT



MODEL	H	W	L
FCU-497-CC1	220	480	760
FCU-497-CC2	220	480	960
FCU-497-CC3	220	480	960
FCU-497-CC4	220	480	1260
FCU-497-CC5	220	480	1260
FCU-497-CC6	220	480	1460
FCU-497-CC7	220	480	1460



HVAC Systems and Equipments Co.
4640 Hedgcoxe Road 227 Plano, TX 75024 – US

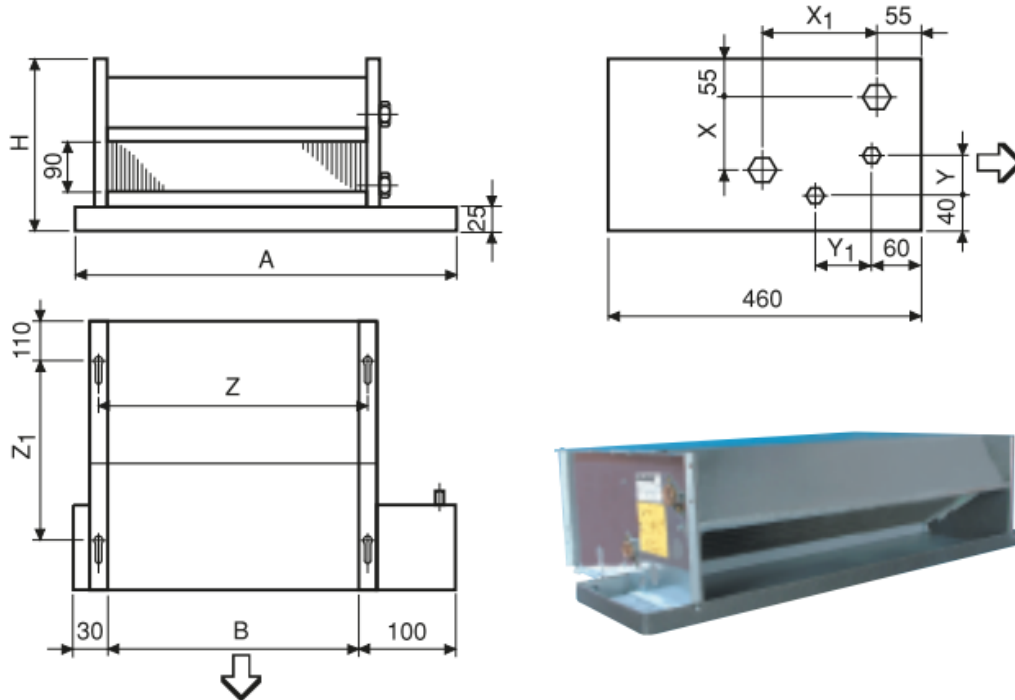
www.gmcair.com

FAN-COIL UNITS

Rev.02
27-05-2015



FCU-597: CEILING TYPE - HIDDEN FAN COIL UNIT



Model	A	B	H	Z	Z ₁	X	X ₁	Y	Y ₁
FCU-597-CH1	640	510	225	536	213	105	145	50	75
FCU-597-CH2	840	710	225	736	213	105	145	50	75
FCU-597-CH3	840	710	225	736	213	105	145	50	75
FCU-597-CH4	1140	1010	225	1036	213	105	145	50	75
FCU-597-CH5	1140	1010	225	1036	213	105	145	50	75
FCU-597-CH6	1340	1210	225	1236	213	105	155	50	75
FCU-597-CH7	1340	1210	225	1236	213	105	155	50	75
FCU-597-CH8	1540	1410	225	1436	213	105	155	50	75

FAN-COIL UNITS

Rev.02
27-05-2015



FCU-697: HIGH PRESSURE FAN COIL UNIT



GMC FCU-697 PRODUCT SPECIFICATIONS:

- High pressure range of 105 to 260 Pa.
- Quiet, three levels speed-cycle, direct coupled, double-suction type centrifugal fan - motor group (230V, 50 Hz.).
- Insulated galvanized steel housing, easily replaceable and washable G2 filters, drainage system, two and four pipes options are available.
- Can be controlled by thermostat.
- Designed to mount to the ceiling and used in suspended ceiling applications.



HVAC Systems and Equipments Co.
4640 Hedcoxe Road 227 Plano, TX 75024 – US

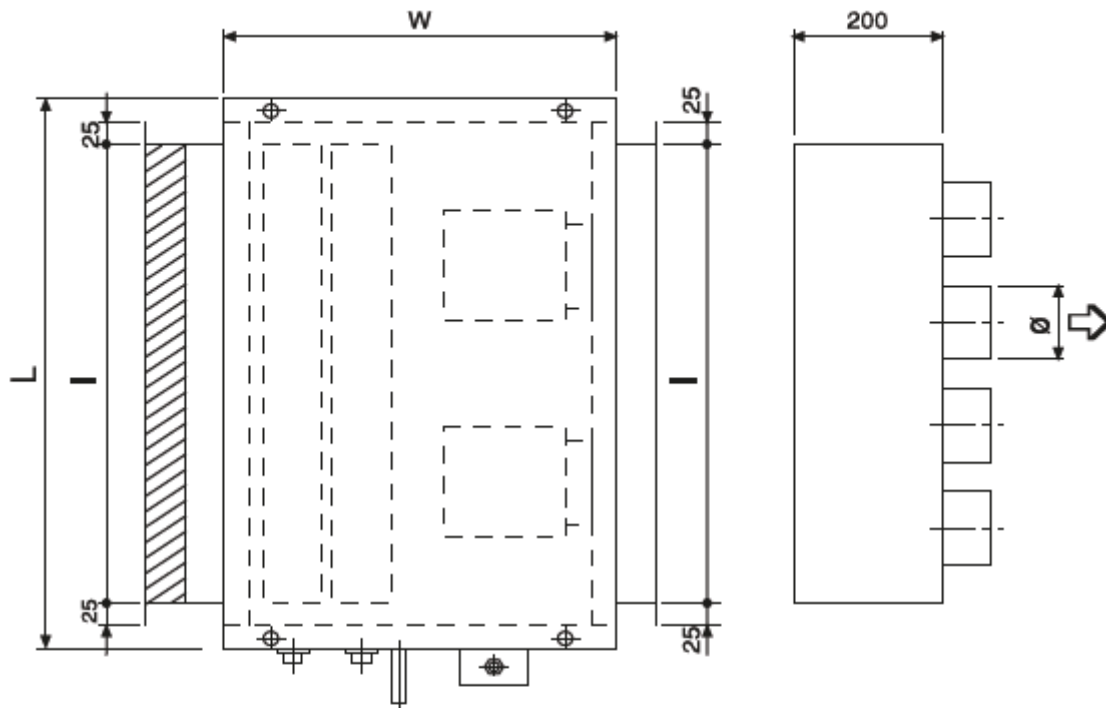
www.gmcair.com 

FAN-COIL UNITS

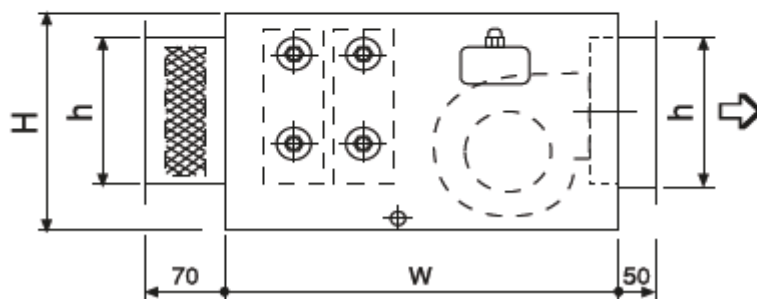
Rev.02
27-05-2015



TECHNICAL DETAILS



Heating/Cooling Cell



FCU-697 EXTERNAL STATIC PRESSURE VALUES

TYPE	Speed	FCU-697 -HP1	FCU-697 -HP2	FCU-697 -HP3	FCU-697 -HP4	FCU-697 -HP5	FCU-697 -HP6	FCU-697 -HP7
4 Pipes	1 / 2 / 3	85/55/40	95/60/50	105/60/50	110/60/50	120/100/85	100/60/50	200/180/150
2 Pipes	1 / 2 / 3	100/70/55	105/75/65	120/80/65	125/70/60	130/115/100	110/75/60	225/195/175



HVAC Systems and Equipments Co.
4640 Hedgoxe Road 227 Plano, TX 75024 – US

www.gmcair.com

FAN-COIL UNITS

Rev.02
27-05-2015



FCU-697 STANDARD SELECTION TABLES

FCU-697 HP MODEL:		FCU-697 -HP1	FCU-697 -HP2	FCU-697 -HP3	FCU-697 -HP4	FCU-697 -HP5	FCU-697 -HP6	FCU-697 -HP7
Length	L (mm)	720	1065	1165	1405	1405	1405	1405
Width	W (mm)	525	525	590	590	590	590	790
Height	H (mm)	300	300	325	325	375	375	675
Duct Connection h/	(mm)	198 / 560	198 / 910	223 / 1010	223 / 1250	273 / 1250	273 / 1250	573 / 1250
*Plenum Cell	(mm)	ø 180 x 2	ø 180 x 3	ø 200 x 3	ø 200 x 4	ø 200 x 4	ø 200 x 4	ø 400 x 2
Cooling Connections		1/2"	1/2"	3/4"	3/4"	1"	1"	1 1/4"
Heating Connections (Auxiliary Coil Con.)		1/2"	1/2"	1/2"	1/2"	3/4"	3/4"	1"
Drain	(mm)	ø 19	ø 19	ø 19	ø 19	ø 19	ø 19	ø 19
Power / Current	Watt	175	250	300	375	500	500	750
	Amper	0.80	1.00	1.40	1.60	2.30	2.20	6.00
Weight	(Kg)	28	38	44	50	60	65	120

*Discharge flange dimensions for plenum cell.

FCU-697 HP MODEL:		FCU-697 -HP1	FCU-697 -HP2	FCU-697 -HP3	FCU-697 -HP4	FCU-697 -HP5	FCU-697 -HP6	FCU-697 -HP7
Cooling Capacity (A)	Q _T kW	4.25	6.75	8.75	11.06	13.20	18.00	24.40
	Q _S kW	3.20	5.15	6.52	8.20	9.80	12.85	17.20
Air Flow	m ³ / h	1000	1750	2200	2500	3000	3500	4500
Water Flow	Lt / h	730	1150	1500	1900	2300	3100	4200
Water Pressure Drop	mmSS	1.70	1.30	1.90	2.13	2.30	2.0	2.0
Heating Capacity (B)	Q _H kW	10.70	18.0	22.80	27.30	32.50	43.40	57.50
Water Flow	Lt / h	460	775	982	1175	1400	1900	2500
Water Pressure Drop	mmSS.	0.60	0.53	0.75	1.12	1.46	1.0	3.80
Heating Cpcty (AuxCoils)(C)	Q _{H1} kW	6.0	10.80	12.75	15.35	18.50	20.33	32.20
Water Flow	Lt / h	260	465	550	660	800	900	1400
Water Pressure Drop	mmSS	0.40	1.60	0.33	0.50	0.68	0.5	2.05
Sound Level	dB(A)	51	50	53	53	53	55	60
Input Power	Watt	135	175	265	280	530	500	815
Input Current	Amper	0.6	0.8	1.2	1.25	2.4	2.2	3.7



FAN-COIL UNITS

Rev.02
27-05-2015



FCU-797: TRENCH HEATER FAN COIL UNIT

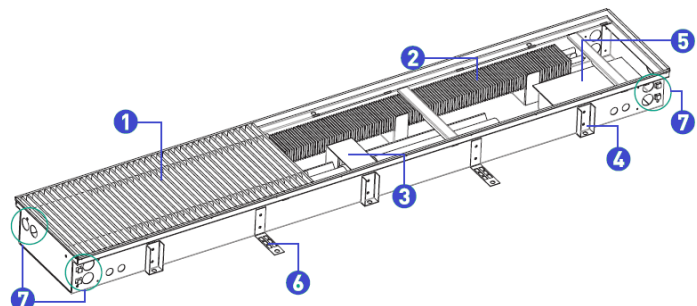


GMC FCU-797 PRODUCT SPECIFICATIONS:

- Electronic expansion valves and control cards supplied by VRF manufacturers are mounted onto the units during manufacture.
- Flow rate adjustment may be conducted by a fan speed control.
- Ability to connect to optional drainage pump as well as individual drainage system.
- Has four models: 85mm Natural Convection (FCU-797-TH1), 106mm Natural Convection (FCU-797-TH2), 85mm Forced Convection (FCU-797-TH3) and 106mm Forced Convection (FCU-797-TH4).
- Aluminum flexible strength linear grille having a decorative appearance and high strength (Optional color selection).

MAIN STRUCTURE

- 1 FLG-013 Floor Linear Grille
- 2 Batteries
- 3 Fan
- 4 Height Adjustment Kit
- 5 Electrical Safety Box
- 6 Floor Mounting Connection
- 7 Water Connection Points

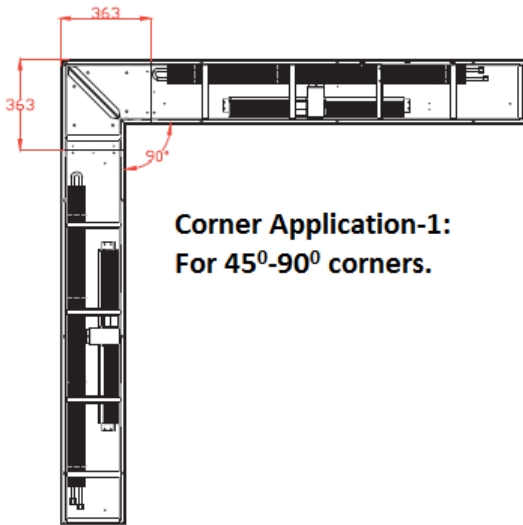


HVAC Systems and Equipments Co.
4640 Hedgoxe Road 227 Plano, TX 75024 – US

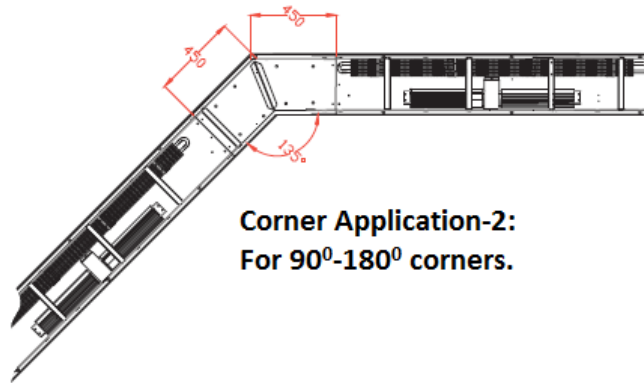
www.gmcair.com

FAN-COIL UNITS

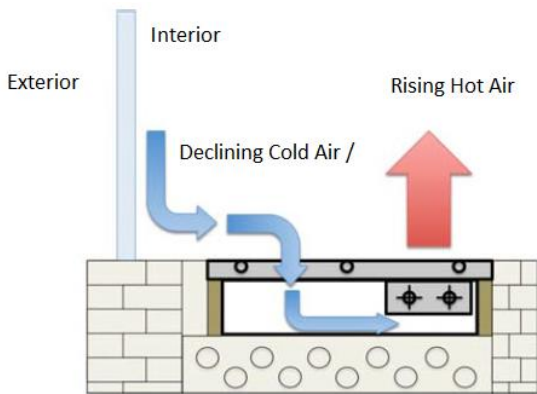
Rev.02
27-05-2015



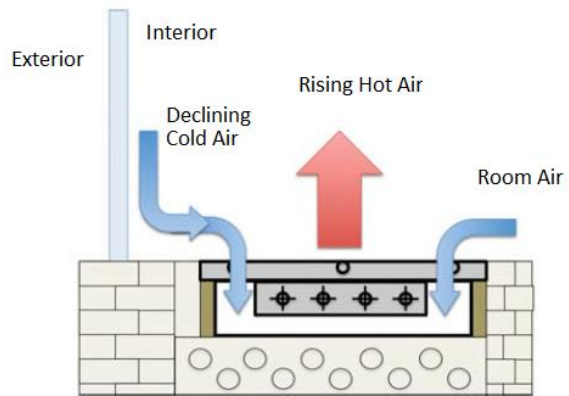
Corner Application-1:
For 45°-90° corners.



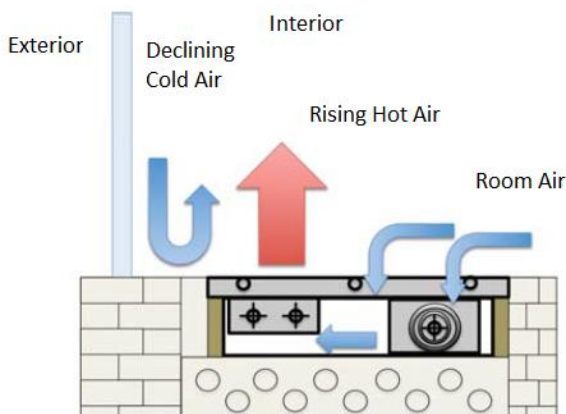
Corner Application-2:
For 90°-180° corners.



APPLICATION WITHOUT FAN TYPE-1: Battery is placed at roomside section of the convector.



APPLICATION WITHOUT FAN TYPE-2: Battery is placed on middle section of convector.



APPLICATION WITH FAN: Battery is placed at window side section and fan is placed at roomside section of the convector. This provides creating a heat screen at the border of exterior and interior air zones.



FAN-COIL UNITS

Rev.02
27-05-2015



FCU-797-TH1/TH2: NATURAL CONVECTION TRENCH HEATERS CAPACITY TABLE

MODEL	Length (mm)				900	1200	1500	1800	2100	2400	2700	3000	3300	3600	3900	4200	4500	4800	5100
FCU-797-TH1	Width (mm)	212 mm	Height (mm)	106 mm	138	288	387	444	570	621	767	853	889	1027	1165	1267	1411	1565	1731
		262 mm		106 mm	234	355	473	598	723	846	974	1087	1129	1306	1479	1610	1792	1987	2197
		362 mm		106 mm	331	503	670	846	1015	1196	1367	1537	1591	1841	2085	2270	2526	2801	3097
MODEL	Length (mm)				900	1200	1500	1800	2100	2400	2700	3000	3300	3600	3900	4200	4500	4800	5100
FCU-797-TH2	Width (mm)	212 mm	Height (mm)	106 mm	166	347	467	536	686	750	924	1028	1071	1239	1403	1527	1701	1885	2085
		262 mm		106 mm	292	443	591	747	903	1057	1217	1358	1411	1632	1848	2012	2240	2484	2746
		362 mm		106 mm	414	629	838	1058	1269	1495	1709	1922	1989	2301	2607	2837	3157	3501	3821

FCU-797-TH3/TH4: FORCED CONVECTION TRENCH HEATERS CAPACITY TABLE

MODEL	Length (mm)				900	1200	1500	1800	2100	2400	2700	3000	3300	3600	3900	4200	4500	4800	5100
FCU-797-TH3	Width (mm)	262 mm	Height (mm)	106 mm	737	1108	1490	1713	2190	2400	2954	3289	3425	3959	4485	4884	5440	6028	6673
		362 mm		106 mm	1032	1548	2089	2398	3066	3355	4134	4604	4793	5545	6280	6833	7610	8431	9331
		462 mm		106 mm	1332	2004	2700	3097	3967	4340	5343	5950	6199	7167	8120	8834	9845	10901	12057
MODEL	Length (mm)				900	1200	1500	1800	2100	2400	2700	3000	3300	3600	3900	4200	4500	4800	5100
FCU-797-TH4	Width (mm)	262 mm	Height (mm)	106 mm	888	1333	1795	2060	2637	2885	3553	3956	4120	4765	5397	5874	6544	7249	8019
		362 mm		106 mm	1243	1866	2513	2884	3691	4039	4974	5538	5768	6671	7555	8223	9161	10148	11219
		462 mm		106 mm	1606	2412	3248	3728	4772	5221	6430	7160	7457	8624	9768	10631	11844	13120	14413

TRENCH HEATER CAPACITY MULTIPLIER TABLE

FCU-797-TH1 h=85mm	Room Temp.				FCU-797-TH2 h=106mm	Room Temp.				FCU-797-TH3 & TH4	Room Temp.						
	20°C	21°C	22°C	24°C		20°C	21°C	22°C	24°C		20°C	21°C	22°C	24°C			
Circulating Water Temp. (°C)	80/60°C	1,29	1,27	1,23	1,17	Circulating Water Temp. (°C)	80/60°C	1,24	1,21	1,18	1,14	Circulating Water Temp. (°C)	80/60°C	1,19	1,18	1,16	1,12
	65/55°C	1,14	1,11	1,08	1,03		65/55°C	1,12	1,09	1,07	1,02		65/55°C	1,1	1,08	1,06	1,03
	50/40°C	1	0,97	0,94	0,88		50/40°C	1	0,97	0,94	0,88		50/40°C	1	0,98	0,96	0,93
	35/30°C	0,72	0,69	0,67	0,62		35/30°C	0,71	0,69	0,66	0,61		35/30°C	0,81	0,79	0,77	0,73
	20/15°C	0,47	0,45	0,43	0,39		20/15°C	0,47	0,45	0,43	0,38		20/15°C	0,61	0,59	0,57	0,54
	5/0°C	0,36	0,34	0,32	0,27		5/0°C	0,36	0,34	0,32	0,29		5/0°C	0,51	0,49	0,47	0,44

ACCESSORIES

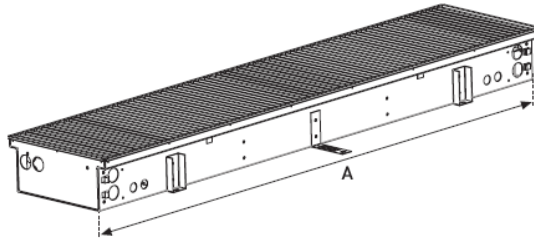
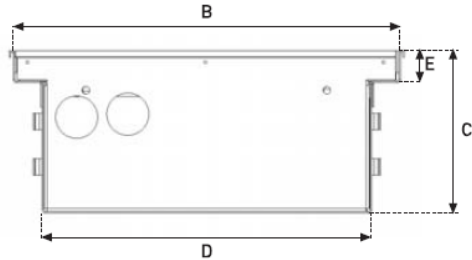


FAN-COIL UNITS

Rev.02
27-05-2015

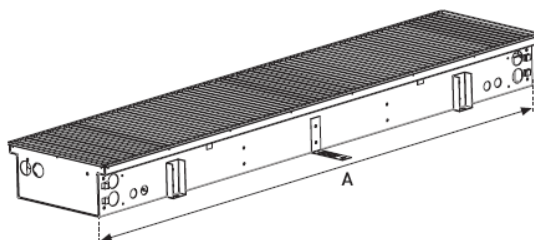
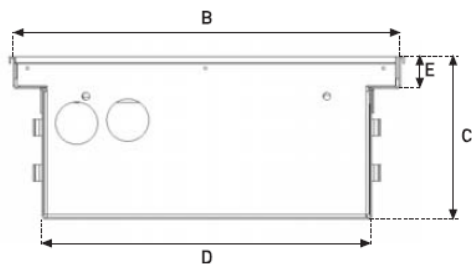


TECHNICAL DETAILS



MODEL	A Length	B - Top Width			C Height	D - Bottom Width			E Thickness	Water Connection Diameter
FCU-797-TH1	900	212	262	362	85	172	222	322	13,4	1/2"
	1200	212	262	362	85	172	222	322	13,4	1/2"
	1500	212	262	362	85	172	222	322	13,4	1/2"
	1800	212	262	362	85	172	222	322	13,4	1/2"
	2100	212	262	362	85	172	222	322	13,4	1/2"
	2400	212	262	362	85	172	222	322	13,4	1/2"
	2700	212	262	362	85	172	222	322	13,4	1/2"
	3000	212	262	362	85	172	222	322	13,4	1/2"
	3300	212	262	362	85	172	222	322	13,4	1/2"
	3600	212	262	362	85	172	222	322	13,4	1/2"
	3900	212	262	362	85	172	222	322	13,4	1/2"
	4200	212	262	362	85	172	222	322	13,4	1/2"
	4500	212	262	362	85	172	222	322	13,4	1/2"
4800	212	262	362	85	172	222	322	13,4	1/2"	
5100	212	262	362	85	172	222	322	13,4	1/2"	

MODEL	A Length	B - Top Width			C Height	D - Bottom Width			E Thickness	Water Connection Diameter
FCU-797-TH2	900	212	262	362	106	172	222	322	21,4	1/2"
	1200	212	262	362	106	172	222	322	21,4	1/2"
	1500	212	262	362	106	172	222	322	21,4	1/2"
	1800	212	262	362	106	172	222	322	21,4	1/2"
	2100	212	262	362	106	172	222	322	21,4	1/2"
	2400	212	262	362	106	172	222	322	21,4	1/2"
	2700	212	262	362	106	172	222	322	21,4	1/2"
	3000	212	262	362	106	172	222	322	21,4	1/2"
	3300	212	262	362	106	172	222	322	21,4	1/2"
	3600	212	262	362	106	172	222	322	21,4	1/2"
	3900	212	262	362	106	172	222	322	21,4	1/2"
	4200	212	262	362	106	172	222	322	21,4	1/2"
	4500	212	262	362	106	172	222	322	21,4	1/2"
4800	212	262	362	106	172	222	322	21,4	1/2"	
5100	212	262	362	106	172	222	322	21,4	1/2"	

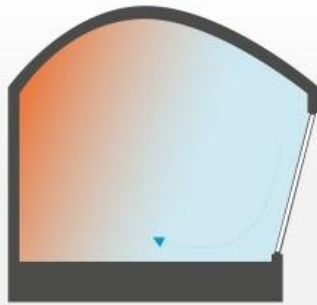


FAN-COIL UNITS

Rev.02
27-05-2015

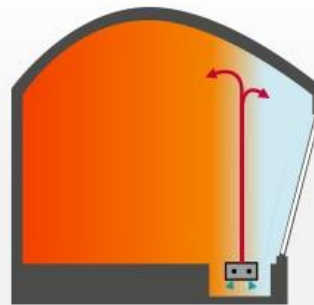


MODEL	A - Length	B - Top Width			C - Height	D - Bottom Width			E - Thickness	Water Connection Diameter
FCU-797-TH3	900	262	362	462	85	222	322	422	13,4	1/2"
	1200	262	362	462	85	222	322	422	13,4	1/2"
	1500	262	362	462	85	222	322	422	13,4	1/2"
	1800	262	362	462	85	222	322	422	13,4	1/2"
	2100	262	362	462	85	222	322	422	13,4	1/2"
	2400	262	362	462	85	222	322	422	13,4	1/2"
	2700	262	362	462	85	222	322	422	13,4	1/2"
	3000	262	362	462	85	222	322	422	13,4	1/2"
	3300	262	362	462	85	222	322	422	13,4	1/2"
	3600	262	362	462	85	222	322	422	13,4	1/2"
	3900	262	362	462	85	222	322	422	13,4	1/2"
	4200	262	362	462	85	222	322	422	13,4	1/2"
4500	262	362	462	85	222	322	422	13,4	1/2"	
4800	262	362	462	85	222	322	422	13,4	1/2"	
5100	262	362	462	85	222	322	422	13,4	1/2"	
MODEL	A - Length	B - Top Width			C - Height	D - Bottom Width			E - Thickness	Water Connection Diameter
FCU-797-TH4	900	262	362	462	106	222	322	422	21,4	1/2"
	1200	262	362	462	106	222	322	422	21,4	1/2"
	1500	262	362	462	106	222	322	422	21,4	1/2"
	1800	262	362	462	106	222	322	422	21,4	1/2"
	2100	262	362	462	106	222	322	422	21,4	1/2"
	2400	262	362	462	106	222	322	422	21,4	1/2"
	2700	262	362	462	106	222	322	422	21,4	1/2"
	3000	262	362	462	106	222	322	422	21,4	1/2"
	3300	262	362	462	106	222	322	422	21,4	1/2"
	3600	262	362	462	106	222	322	422	21,4	1/2"
	3900	262	362	462	106	222	322	422	21,4	1/2"
	4200	262	362	462	106	222	322	422	21,4	1/2"
4500	262	362	462	106	222	322	422	21,4	1/2"	
4800	262	362	462	106	222	322	422	21,4	1/2"	
5100	262	362	462	106	222	322	422	21,4	1/2"	



Problem

Cold influence from large glazed areas causes drafts and high heat loss.



Solution

Warm air screens off the cold influence eliminating drafts and retaining heat.



FAN-COIL UNITS

Rev.02
27-05-2015



FCU-897: CEILING TYPE – CASSETTE 4WAY FAN COIL UNIT



GMC FCU-897 PRODUCT SPECIFICATIONS :

Cassette-type fan coil units

Construction features

Fan coils: cassette-type for installation in false ceilings, with air inlet and outlet directly into the room.

Heat exchanger: with finned coil.

Fan: 3-speed.

Structure: self-supporting, in galvanised metal sheet, complete with condensation drain device (up to 200 mm above the unit).

Air supply panel: in ABS polymer with manually adjustable outlet fins, inlet grille and cleanable filter.

Versions

- **Standard** - for 2-pipes-systems.
- **B4** - for 4-pipes-systems.
- **REL** - for 2-pipes-systems supplementary electric heater.

Accessories supplied loose

- ON/OFF 3-way valve for 2-pipe-systems.
- ON/OFF 3-way valves for 4-pipe-systems.
- Micro-pump for condensation.
- Auxiliary condensation drain pan.
- Outlet nozzle lock.
- Photocatalytic and passive electrostatic filter.

STANDARD CONTROLS

For wall installation

- Panel with speed and summer/winter switch.
- Panel with room thermostat, summer/winter switch, ON/OFF valve signal and electric heater.
- Electronic panel with automatic summer/winter changeover for 2-pipe-systems.
- Electronic panel with automatic summer/winter changeover and automatic speed regulation for 2-pipe-systems with electric heater or 4-pipe-systems.

ADVANCED CONTROLS

- Electronic control panel for wall mounting.
- Liquid crystal and infrared remote control.

For installation on machine.

- Master/slave electronic card.
- Temperature probe for hot row.
- Module for management of ON/OFF valves and electric heater.
- Serial interface for connection to BMS (proprietary protocol, Modbus RTU).
- Serial converters (RS485/RS232, RS485/USB) in the case of centralised unit management.



HVAC Systems and Equipments Co.
4640 Hedgcoxe Road 227 Plano, TX 75024 – US

www.gmcair.com

FAN-COIL UNITS

Rev.02
27-05-2015



Wall fitted panel



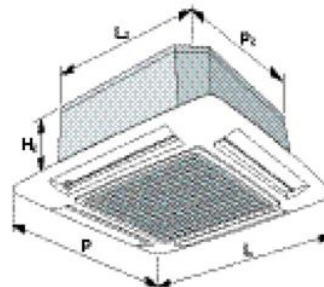
Infrared remote control with bracket for wall installation

Electronic control panel for wall mounting.

FCU-897: CEILING TYPE - CASSETTE 4 WAY FAN COIL UNIT			FCU-897 CCW1-REL	FCU-897 CCW1-B4	FCU-897 CCW2-REL	FCU-897 CCW2-B4	FCU-897 CCW3-REL	FCU-897 CCW3-B4	FCU-897 CCW4-REL	FCU-897 CCW4-B4	FCU-897 CCW5-REL	FCU-897 CCW5-B4
❶ Cooling capacity (total heat)	MAX	kW	2,4	1,9	4	3,23	4,7	4	6,3	7,6	10	9,8
	MED	kW	1,8	1,43	2,85	2,42	3,5	3,05	4,5	5,1	7,1	7,3
	MIN	kW	1,55	1,23	1,9	1,61	2,85	2,5	3,4	3,17	3,9	4,1
❷ Heating capacity (70°C)	MAX	kW	5,4	-	7,1	-	10,2	-	13,8	18,4	23,6	-
	MED	kW	4,2	-	5,8	-	7,4	-	10,0	12,4	17,0	-
	MIN	kW	3,7	-	3,4	-	6,3	-	7,4	7,3	9,2	-
❸ Heating capacity (50°C)	MAX	kW	3,15	-	4,19	-	6,02	-	8,11	10,8	13,9	-
	MAX	kW	-	1,9	-	4,8	-	4,6	-	-	-	9
	MED	kW	-	1,43	-	2,42	-	3,05	-	-	-	7,3
❹ Heating capacity additional coil B4	MIN	kW	-	1,24	-	2,13	-	2,73	-	-	-	5,1
	MIN	kW	-	1,24	-	2,13	-	2,73	-	-	-	5,1
	MIN	kW	-	1,24	-	2,13	-	2,73	-	-	-	5,1
Electric heater	230-1-50 V	kW	1,5	-	2,5	-	2,5	-	-	-	-	-
Electric heater REL	400-3-50 V	kW	-	-	-	-	-	3,0	3,0	3,0	-	-
Air flow speed	MAX	m³/h	662	662	698	698	850	850	1.019	1.217	1.685	1.685
	MED	m³/h	450	450	490	490	601	601	731	871	1.134	1.134
	MIN	m³/h	360	360	310	310	472	472	540	529	641	641
Sound power level	MAX	dB(A)	49	49	54	55	59	58	49	56	63	63
	MED	dB(A)	38	38	45	45	50	50	41	49	55	55
	MIN	dB(A)	34	33	34	33	44	42	36	41	42	42
❺ Sound pressure speed	MAX	dB(A)	41	41	46	47	51	50	41	48	55	55
	MED	dB(A)	30	30	37	37	42	42	33	41	47	47
	MIN	dB(A)	26	25	26	25	36	34	28	33	34	34
Maximum absorbed power		W	70	70	90	90	100	100	90	120	200	200
Main supply		V-ph-Hz	230-1-50	230-1-50	230-1-50	230-1-50	230-1-50	230-1-50	230-1-50	230-1-50	230-1-50	230-1-50
DIMENSIONS AND WEIGHTS			25	25	40	40	50	50	60	85	110	110
LxHxP ₂ - Width x Height x Depth	mm		575x298x575	575x298x575	575x298x575	575x298x575	575x298x575	575x298x575	825x298x825	825x298x825	825x298x825	825x298x825
LxHxP - Width x Height x Depth	mm		720x720x30	720x720x30	720x720x30	720x720x30	720x720x30	720x720x30	960x960x30	960x960x30	960x960x30	960x960x30
Weight FCU-097/05 and FCU-097/05-REL	kg		18,5	-	20	-	20	-	37	39	39	-
Weight FCU-097/05 - B4	kg		-	18,5	-	20	-	20	-	-	-	40
Air supply panel weight	kg		4	4	4	4	4	4	6	6	6	6

In the following conditions:

- ❶ Air: 27°C D.B.; 19°C W.B. - Water: 7/12°C.
- ❷ Air: 20°C - Water: 70/60°C.
- ❸ Air: 20°C - Water: 50°C, flow rate as in cooling.
- ❹ At 1 m from air outlet with directionality factor of 2.

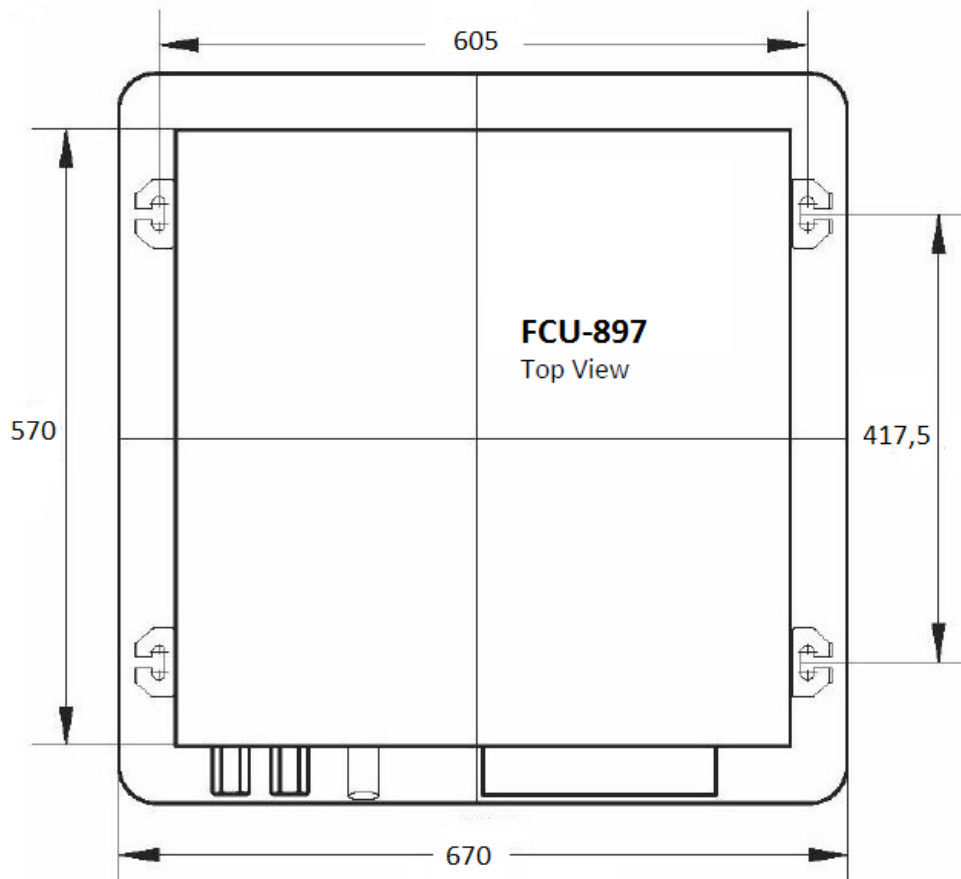
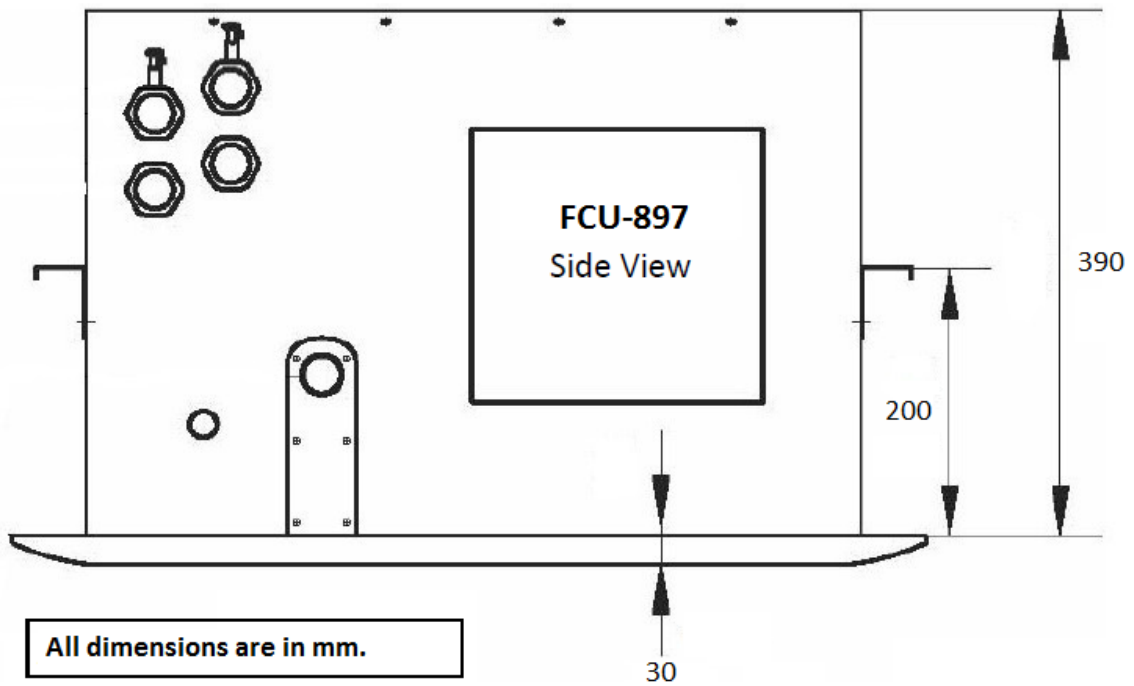


FAN-COIL UNITS

Rev.02
27-05-2015



TECHNICAL DETAILS

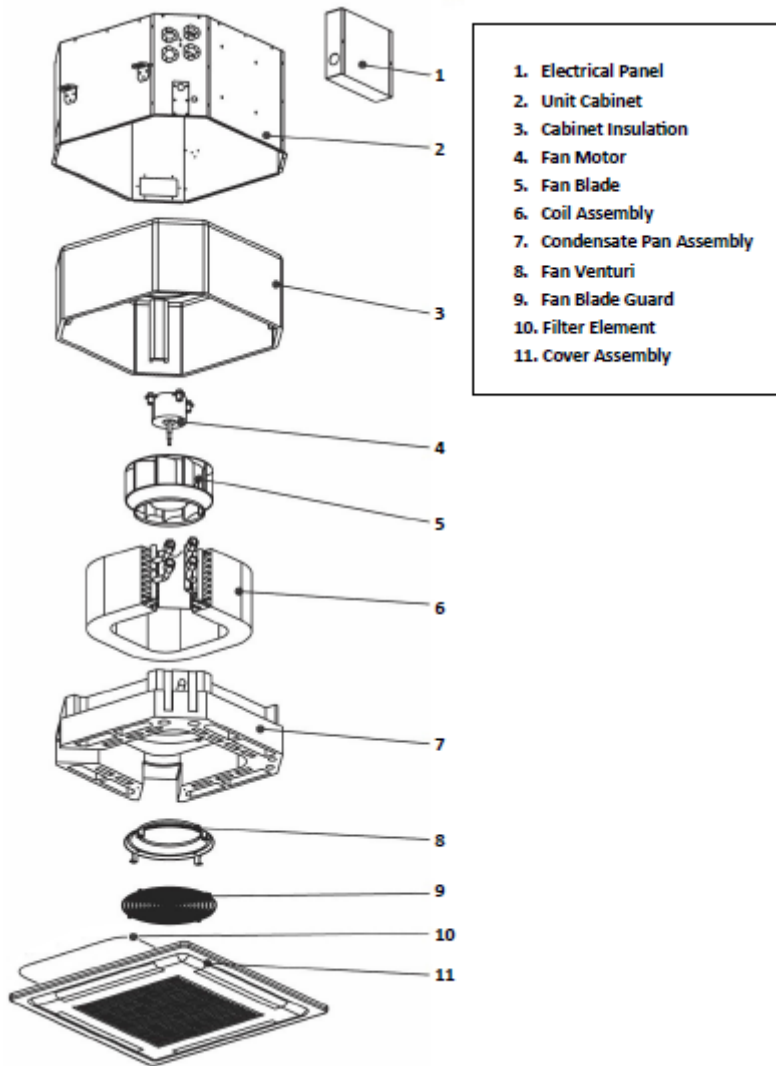


FAN-COIL UNITS

Rev.02
27-05-2015



MOUNTING DETAIL





FAN-COIL UNITS

ORDER PARAMETERS

FCU-097	-CH	1
FCU-197: Floor Type - Cassette Fan Coil (-FC) FCU-297: Floor Type-Hidden FC/Front Blow (-FH) FCU-397: Floor Type-Hidden FC/Overhead Blow (-FH) FCU-497: Ceiling Type Cassette Fan Coil (-CC) FCU-597: Ceiling Type Hidden Fan Coil (-CH) FCU-697: High Pressure Fan Coil (-HP) FCU-797: Trench Heater Fan Coil (-TH) FCU-897: Ceiling Type-4 ways Cassette FC (-CCW)		1: Sub-Model No

