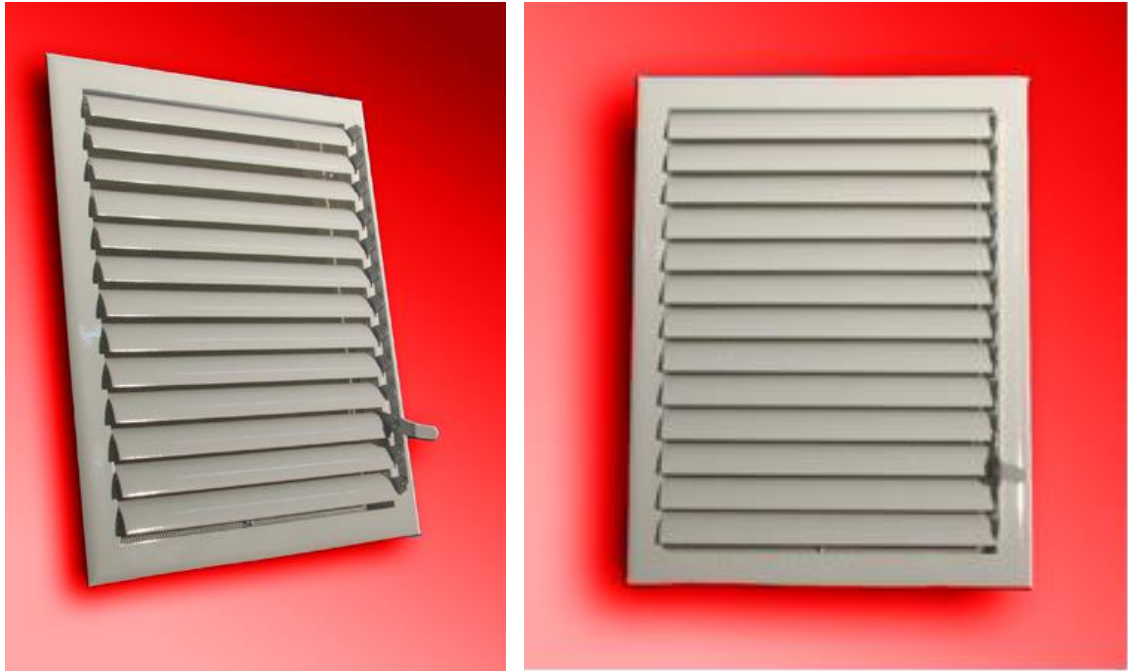


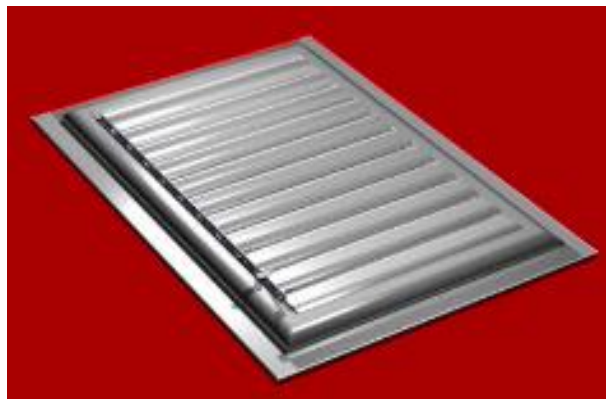
HANDLED LOUVERS

Rev.02
27-05-2015



GMC HL-062 PRODUCT SPECIFICATIONS:

- Standard Material: Aluminum profile. Used in bathroom ventilations, air apparatus, where handle control is needed.
- Has two types: Z-Type Bladed (HL-162) and Curvilinear-Type Bladed (HL-262).
- On request, wire screen can be added on backside for keeping dust and insects out.
- Standard Frame width is 32.5mm. On request, frame width can be reduced to 22mm.
- Can be manufactured as “click-fitted” or “surface-glued” types.
- Mounted with 4 mm screws on frame, with appropriate quantity.
- Eloxal, anodizing or electrostatic powder coating with the color from RAL catalogue.



HVAC Systems and Equipments Co.
4640 Hedgoxe Road 227 Plano, TX 75024 – US

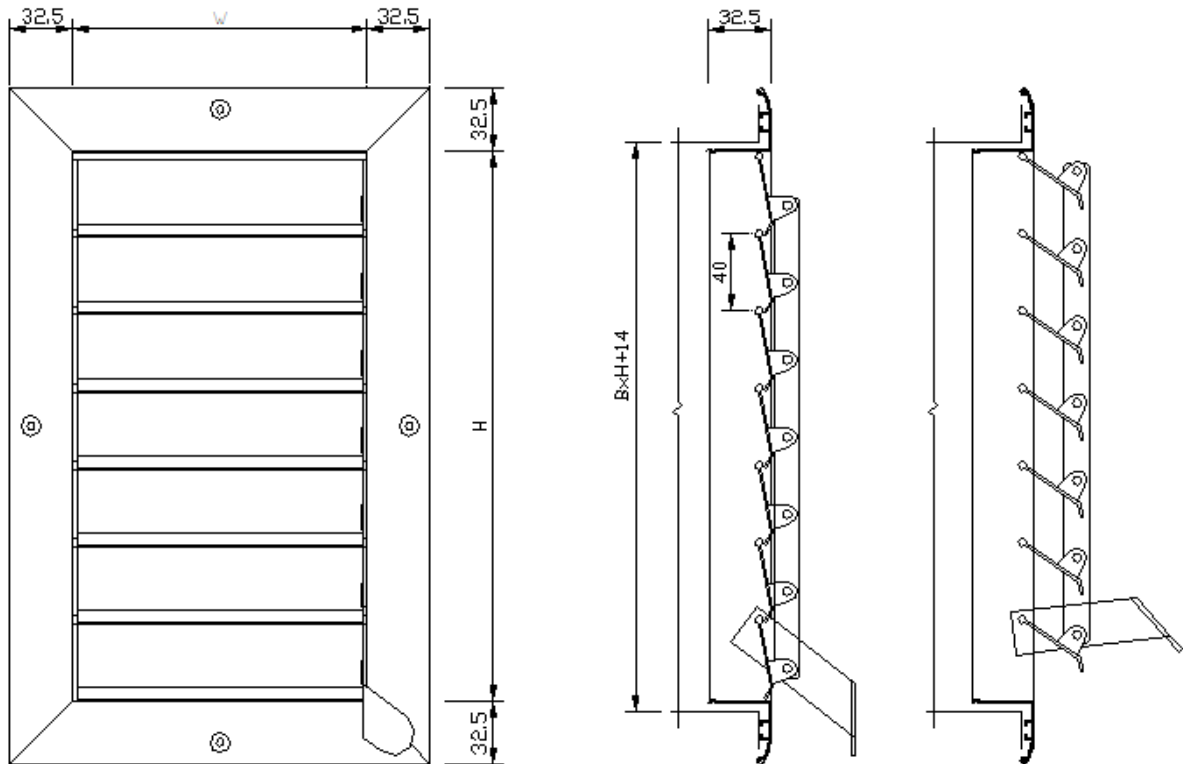
www.gmcair.com 

HANDLED LOUVERS

Rev.02
27-05-2015



TECHNICAL DETAILS



HL-062, EFFECTIVE AREA TABLE (m²)

H mm	W (mm)						
	200	300	400	500	600	800	1000
200	0,025	0,038	0,05	0,07	0,08	0,11	0,13
300	0,042	0,07	0,09	0,11	0,14	0,19	0,23
400	0,06	0,09	0,13	0,16	0,2	0,26	0,33
500	0,08	0,12	0,17	0,21	0,25	0,34	0,43
600	0,1	0,15	0,2	0,26	0,31	0,42	0,53
800	0,13	0,21	0,28	0,35	0,43	0,57	0,73
1000	0,17	0,26	0,35	0,45	0,54	0,73	0,93

Air volume m³/h

H mm	W (mm)						
	200	300	400	500	600	800	1000
200	270	410	540	756	864	1188	1404
300	454	756	972	1188	1512	2052	2484
400	648	972	1404	1728	2160	2808	3564
500	864	1296	1836	2268	2700	3672	4644
600	1080	1620	2160	2808	3348	4536	5724
800	1404	2268	3024	3780	4644	6156	7884
1000	1836	2808	3780	4860	5832	7884	10044



HVAC Systems and Equipments Co.
4640 Hedgoxe Road 227 Plano, TX 75024 – US

www.gmcair.com

HANDLED LOUVERS

Rev.02
27-05-2015



ORDER PARAMETERS

HL-062	F220	01	OD9010	FM	N 300X300
HL-162: Z-Bladed HL-262: Curv.-Bladed				N: Neck Size	
F220: Frame=22 mm F325: Frame=32,5 mm				00: No Mounting SM: Screw Mounting FM: Click-Fitted Mounting GM: Surface-Glued Mounting	
00: No Wire Screen 01: Wire Screen Added				00: No coating EX: Eloxal Paint Coating OD----: Oven Drying Paint Coating	

