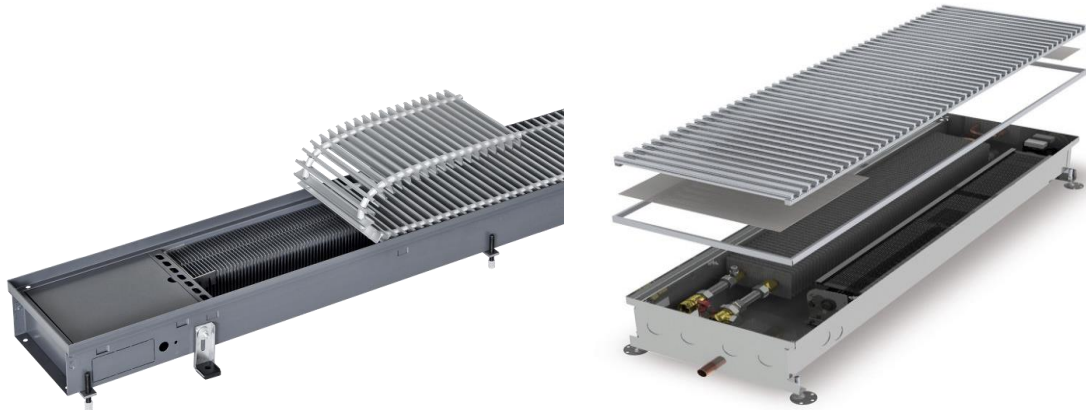


FLOOR LINEAR GRILLES

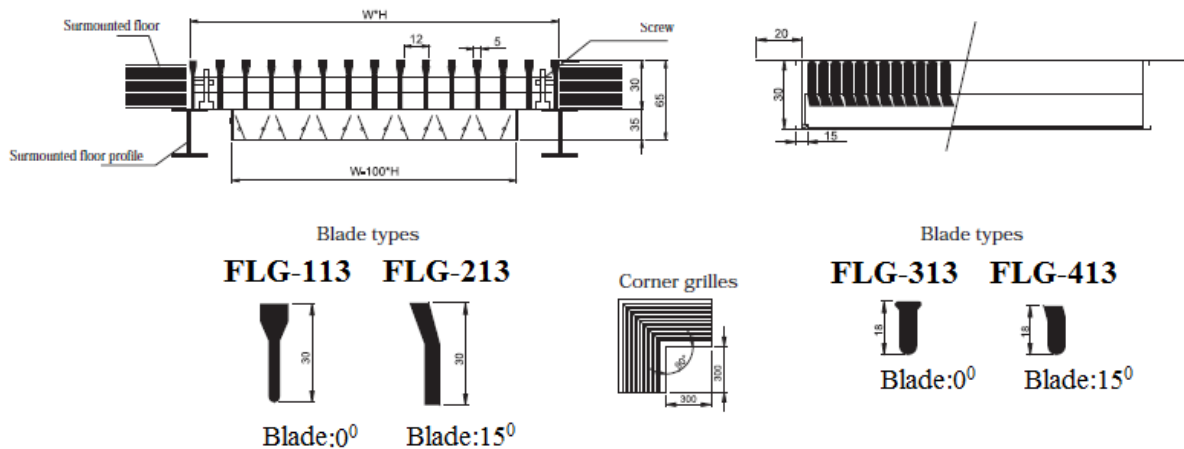
Rev.02
26-02-2015



GMC FLG-013 PRODUCT SPECIFICATIONS:

- Standard Material: Aluminum Profile.
- Usable for supply and return air ducts. Proper appearance with decorative design.
- Useful heating applications in mid-seasons.
- Has four models: Standard 0°-Thinned Blade Model (FLG-113), Standard 15°-Bladed Model (FLG-213), Spring-loaded 0°-Blade Model (FLG-313), Spring-loaded 15°-Bladed Model (FLG-413) and Special Flexible Plastic Model (FLG-513).
- Mounted with 4 mm screws on frame. Optional: Clip or plate-spring assemblies.
- On request, damper can be added to control air flow rate.
- Eloxal, anodizing or electrostatic powder coating with the color from RAL catalogue.

TECHNICAL DETAILS



HVAC Systems and Equipments Co.
4640 Hedcoxe Road 227 Plano, TX 75024 – US

www.gmcair.com

FLOOR LINEAR GRILLES

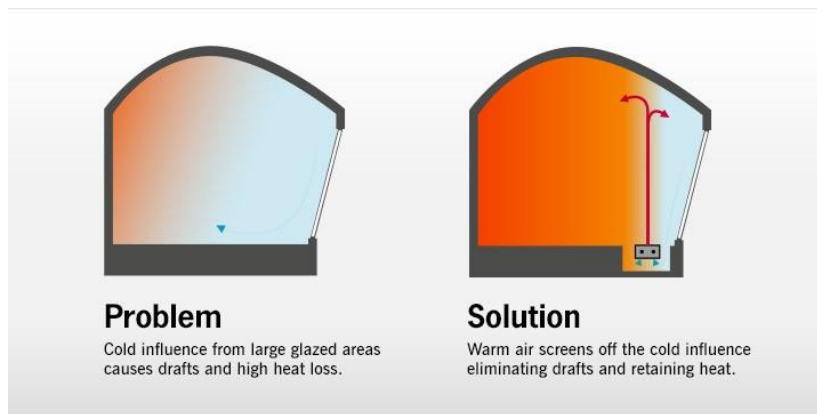
Rev.02
26-02-2015



FLG-013, QUICK SELECTION TABLE

Standard Sizes W*H (mm)	Effective Area (m ² /h)	Flow Rate (m ³ /h)
200*75	0,0054	68
300*75	0,0080	101
500*75	0,0150	189
400*100	0,0180	227
500*100	0,0220	277
500*150	0,0360	451
800*150	0,0570	718
1000*150	0,0770	970
800*200	0,0770	970
1000*200	0,0970	1222
1000*300	0,2500	3150
1200*500	0,3180	4007

Assumed air velocity 3,5m/s.



FLG-013, EFFECTIVE AREA TABLE (m²)

		H (mm)												
		50	75	100	125	150	175	200	225	250	300	400	500	600
V (mm)	250	0,008	0,011	0,016	0,019	0,023	0,026	0,029	0,033	0,037	0,044	0,059	0,074	0,088
	300	0,010	0,014	0,019	0,024	0,028	0,032	0,036	0,040	0,046	0,054	0,072	0,090	0,108
	350	0,011	0,016	0,023	0,028	0,033	0,038	0,042	0,047	0,054	0,064	0,085	0,106	0,127
	400	0,013	0,019	0,026	0,032	0,038	0,043	0,049	0,055	0,062	0,073	0,098	0,122	0,147
	450	0,015	0,021	0,030	0,036	0,043	0,049	0,055	0,062	0,070	0,083	0,111	0,139	0,166
	500	0,017	0,024	0,033	0,041	0,048	0,055	0,062	0,069	0,079	0,093	0,124	0,155	0,186
	600	0,020	0,028	0,040	0,048	0,057	0,065	0,073	0,082	0,093	0,110	0,147	0,184	0,220
	700	0,023	0,033	0,047	0,057	0,067	0,077	0,086	0,096	0,110	0,130	0,173	0,216	0,259
	800	0,027	0,038	0,054	0,065	0,077	0,088	0,099	0,111	0,126	0,149	0,199	0,249	0,298
	900	0,030	0,043	0,061	0,074	0,087	0,100	0,112	0,125	0,143	0,169	0,225	0,281	0,337
	1000	0,033	0,048	0,067	0,081	0,095	0,110	0,124	0,138	0,157	0,186	0,248	0,310	0,372
	1200	0,040	0,058	0,081	0,098	0,115	0,133	0,150	0,167	0,190	0,225	0,300	0,375	0,450
	1400	0,047	0,067	0,094	0,114	0,134	0,154	0,174	0,195	0,221	0,262	0,349	0,436	0,523
	1600	0,054	0,077	0,108	0,131	0,154	0,177	0,200	0,224	0,254	0,301	0,401	0,501	0,601
1800	0,061	0,087	0,121	0,147	0,173	0,199	0,225	0,251	0,286	0,337	0,450	0,562	0,675	
2000	0,068	0,097	0,135	0,164	0,193	0,222	0,251	0,280	0,319	0,376	0,502	0,627	0,753	



HVAC Systems and Equipments Co.
4640 Hedcoxe Road 227 Plano, TX 75024 – US

www.gmcair.com

FLOOR LINEAR GRILLES

Rev.02
26-02-2015



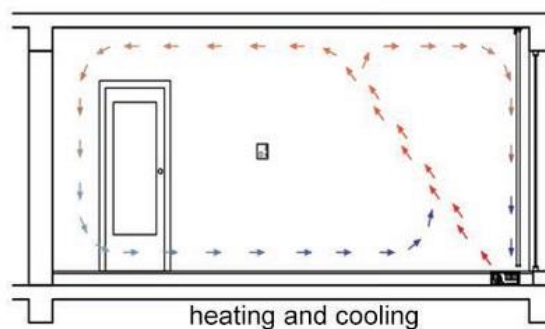
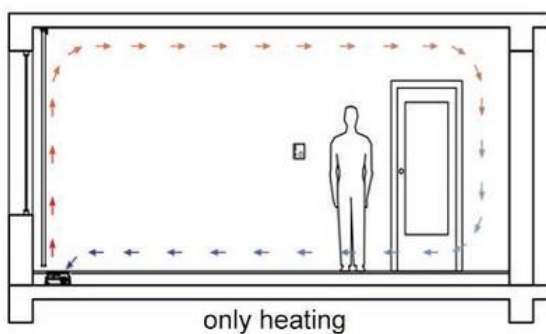
FLG-013, DETAILED SELECTION TABLE

H [mm] A [m ²]	Veff [m/s]	2	2,5	3	3,5	4	4,5	5	6
H = 50 A = 0,033	V (m ³ /h) SW (m) SF (m)	240 1-2,5 1-2	300 2-3 1-2,5	360 2-3,5 2-3	421 2-4 2-3,5	481 2-4,5 2,5-4	541 3-5 3-4,5	601 3-5,5 3-5	721 4-6 4-5
H = 75 A = 0,048	V (m ³ /h) SW (m) SF (m)	343 2-3 2-2,5	429 2-4 2-3	515 2-4,5 2-3,5	601 3-5 3-4	686 3-5,5 3-4,5	772 4-6 4-5	858 4-7 4-6	1.030 5-8 5-7
H = 100 A = 0,067	V (m ³ /h) SW (m) SF (m)	481 2,5-4 2-3,5	601 3-5 2-4	721 3-5,5 3-4,5	842 4-6,5 4-5,5	962 5-8 5-7	1.082 6-9 5-8	1.203 6-10 6-8	1.443 7-11 7-9
H = 125 A = 0,081	V (m ³ /h) SW (m) SF (m)	584 3-4,5 3-4	730 3-5,5 3-5	876 4-6 4-5	1.022 5-7 5-6	1.168 6-9 6-7	1.314 6-10 6-8	1.460 7-11 7-9	1.752 8-13 8-11
H = 150 A = 0,095	V (m ³ /h) SW (m) SF (m)	686 4-6 4-5,5	858 4-7 4-6	1.030 5-8 5-7	1.202 6-9 6-8	1.373 7-11 7-10	1.545 8-12 8-11	1.717 9-14 9-12	2.060 10-16 10-14
H = 200 A = 0,124	V (m ³ /h) SW (m) SF (m)	892 4-7 4-6	1.115 5-8 5-7	1.416 5-9 5-8	1.561 7-10 7-9	1.785 8-12 8-11	2.008 9-13 9-12	2.231 10-15 10-14	2.677 11-18 11-16
H = 250 A = 0,157	V (m ³ /h) SW (m) SF (m)	1.133 4-7,5 4-7	1.416 5-9 5-8	1.699 6-10 6-9	1.982 7-11 7-10	2.266 8-13 8-12	2.549 9-14 9-13	2.832 10-15 10-14	3.399 11-18 11-16
H = 300 A = 0,186	V (m ³ /h) SW (m) SF (m)	1.338 5-8 4-7	1.673 5-10 5-9	2.008 6-11 6-10	2.342 7-12 7-11	2.677 8-14 8-13	3.012 9-15 9-14	3.346 11-16 11-15	4.016 12-20 12-17

Datas given for 1 m length of grille

Veff : Effective Velocity
SW : Throwing Distance from Wall

V : Air Volume(Flow rate)
H : Grille Height
A : Grille Effective Area



FLOOR LINEAR GRILLES

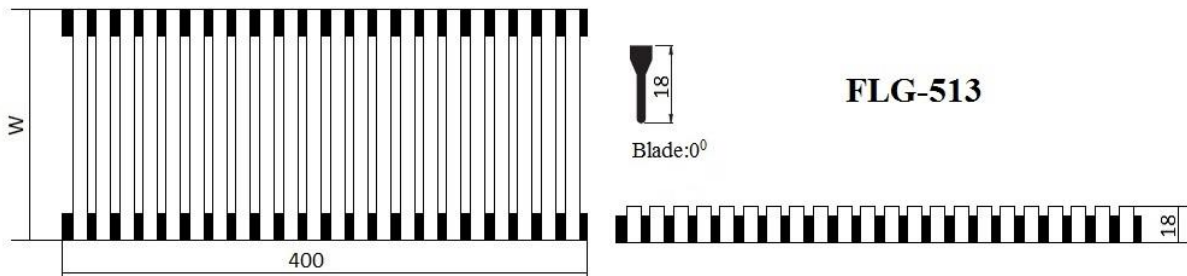
Rev.02
26-02-2015



FLG-513, UNIQUE FLEXIBLE PLASTIC MODEL



- The product length of FLG-513 is 400mm, standard. For requested lengths, 400+400+... mm application is required. Product's standard height is 18mm, the width can be manufactured as requested value. Blades are made of aluminum with eloxal coating.



FLG-513, UNIQUE FLEXIBLE	
Chasis Material	Flexible plastic.
Chasis Length	400 mm Standard. Able to add 400+400mm.
Chasis Height	18 mm Standard.
Blade Material	Aluminum + Eloxal Coating(Standard: 0° - Blade)
Blade Width	As requested.



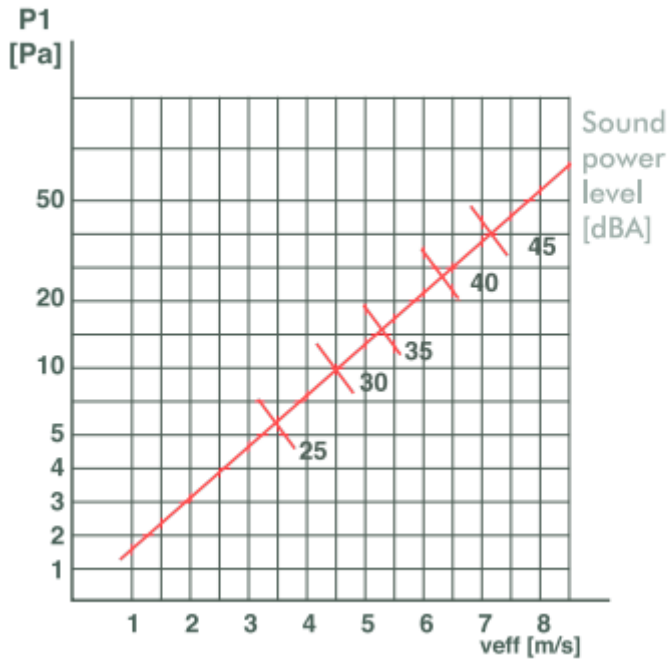
FLOOR LINEAR GRILLES

Rev.02
26-02-2015

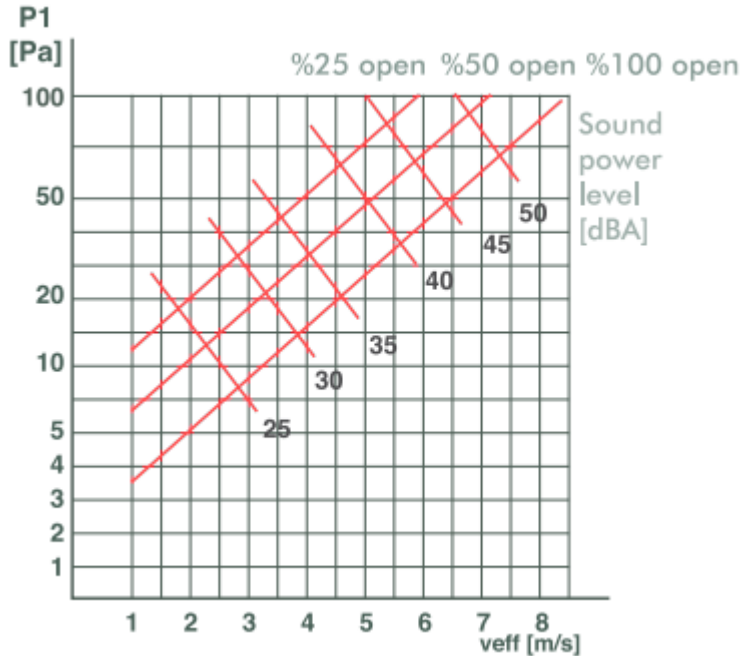


DATA DIAGRAMS

FLG-013, PRESSURE DROP AND NOISE LEVELS



FLG-013, PRESSURE DROP AND NOISE LEVELS (with opposite bladed damper)



FLOOR LINEAR GRILLES

Rev.02
26-02-2015



ORDER PARAMETERS:

FLG-013	22	PFD	OD9010	SM	N 600X250
FLG-113: Std, 0' Flap FLG-213: Std, 15' Flap FLG-313: Spr, 0' Flap FLG-413: Spr, 15' Flap					N: Neck Size F: Frame Size
00: No Frame 22: Frame=22mm 32: Frame=32mm					00: No Mounting SM: Screw Mounting CM: Clips Mounting PM: Plate-spring Mounting
000: Without Damper OFD: Opposite Flap Damper PFD: Parallel Flap Damper					00: No coating EX: Eloxal Coating OD-----: Oven Drying Coating

