

Monterey Plus Home Furnaces

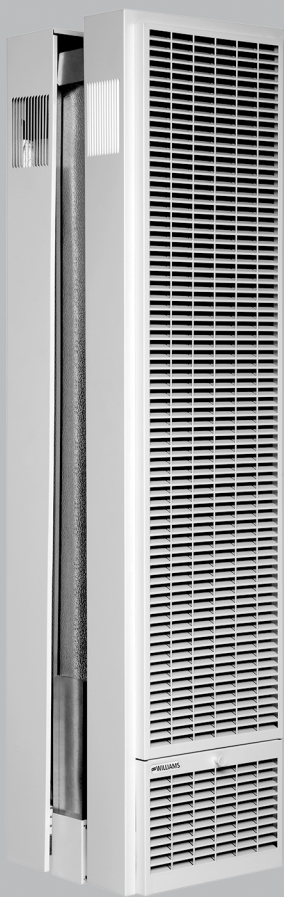
Monterey Plus Home Furnaces offer traditional home comfort with lower heating costs, convenience and high-efficiency. Easily recessed or surface mounted options are great in homes, schools, cabins apartments, offices and shops.

Heating rooms individually allows comfort in areas being used while saving fuel costs in unused areas.

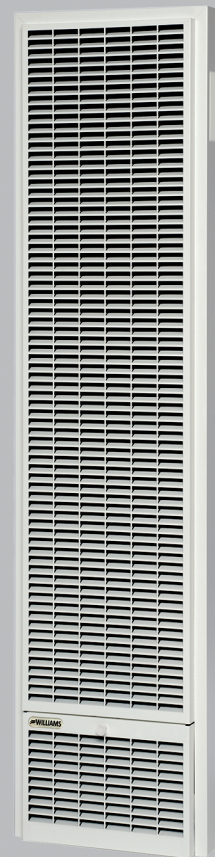
For additional money-saving efficiency, install one of our optional blowers

Features

- No electricity required
- "Matchless" pilot igniter
- Easy installation
- Patented side relief opening draft hood design reduces flue gas temperature to minimize normal heat loss
- Natural and propane gas models (conversion kits available)
- Automatic temperature and safety controls
- Resettable vent-limit safety switch
- Thermostat included, may be wall- or cabinet-mounted



**Dual-wall Top-Vent
50,000 Btu/hr.**



**25,000 - 35,000
Btu/hr.**

Williams' dual-wall model, with patented energy-maximizing side-relief draft hood openings will heat two or more rooms quickly and economically. Conveniently installs in the wall to heat two adjacent rooms (25,000 Btu/hr. on each side)

Monterey Plus Home Furnaces

Model Number		Btu/hr. Input	Btu/hr. Output	Efficiency Percent		Dimensions (Inches)			Thermostat	Shipping Weight (lbs.)
Natural	Propane			Thermal	AFUE	Width	Depth	Height		
Single-Sided Furnaces										
Conversion Kits Available										
2509822	2509821	25,000	19,200	77	71	16	6	65¾	Millivolt	83
3509822	3509821	35,000	25,000	71	69	16	6	65¾	Millivolt	83
Double-Sided Furnaces										
Conversion Kits Available										
5009822	5009821	50,000	38,000	78	71	16	6 EACH SIDE	65¾	Millivolt	137

* Elevation rating from sea level to 2,000'

Higher altitude models are available

1/2" Gas Connection

FEATURES

"Matchless" Pilot Igniter

All models include a "matchless" pilot igniter that assures convenient pilot lighting without matches.

Automatic Thermostat

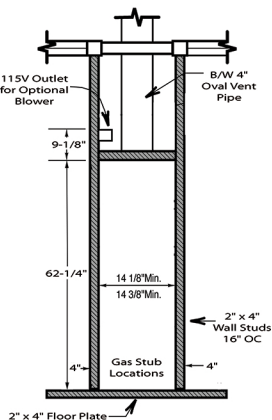
No Electricity Required - All models are equipped with a self-generating millivolt thermostat that may be wall- or cabinet-mounted. All models feature resettable vent-limit safety switch as standard equipment.

Contemporary Finish

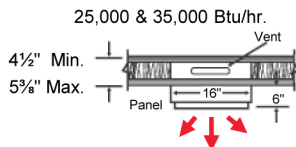
Soft-white, powder-coat, heat-resistant finish to compliment any decor.

Clearances

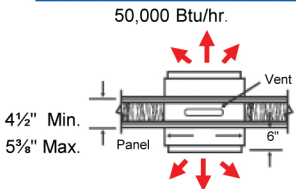
- 4" from an intersecting wall.
- 16" from the top of the appliance to the ceiling or other obstructions.
- 48" from the furnace front to draperies, furniture or other combustibles.



Top-View Single-Sided Models



Top-View Double-Sided Models



ACCESSORIES

Blower - attaches to top of the Monterey Furnaces with ON/OFF switch or automatic operation. Improves circulation of warm air and reduces temperature differences in the room. Optional deluxe blower for increased airflow. Two blowers may be used on 50,000 Btu/hr. units.

Model 2901 - 100 CFM, shipping weight 9 lbs.

Model 2907 - 125 CFM, shipping weight 9 lbs.



Rear-Outlet Register - Chain operated damper with register flush on rear wall, adjusts amount of heat delivered through rear register. Motorized rear-outlet register for increased airflow also available.

Model 6901 - Standard model, shipping weight 4 lbs.

Model 6919 - Motorized model for recessed installation.

Model 6920 - Motorized model for surface-mounted installation. Shipping weight - 6919 and 6920, 10 lbs.

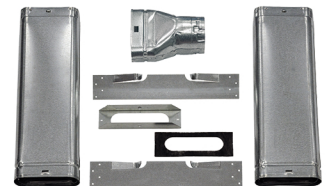


Conversion Kits - Natural gas to LP or LP to Natural gas selections available.

Oval-Vent Starter Kit - contains hold down plate, oval-to-round adapter, spacer plates and two pieces of 2-foot lengths of oval pipe.

Model 9929 - USA

Model 9930 - Canada



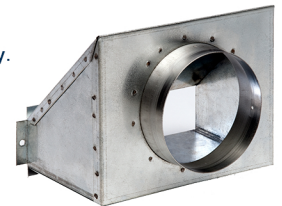
Replacement Face Panel - soft-white powder-coat face panel
Model 4915, shipping weight 30 lbs.

Vent Adapter - Surface-mounted furnace installations only.

Model 9902, without optional blower installed.

Model 9910, with optional blower installed.

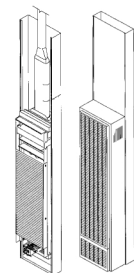
Shipping weight 3 Lbs.



High Altitude models are available

Free-standing Kit - Allows single-sided furnaces to be surface-mounted instead of recessed. Ideal for remodeling in exiting masonry construction or when studs are substandard. (furnace and face panel not included),

Model 4901 - shipping weight 23 lbs.



Scan for more information on Williams' products

IMPORTANT

- Read owner's manual before using/installing.
 - Photographs are representative only.
 - Check local codes and ordinances for permitted uses.
 - Consult installation manual for clearances prior to installation.
 - We reserve the right to amend product specifications without notice.
 - Installation and servicing recommended by a qualified service person.
 - Please read the warranty for any limitations of disclaimers.
- Combustion chamber carries a 10-year limited warranty. All other parts carry a one-year limited warranty.
- Venting must comply with the "Venting and Chimney Requirements" section of the instruction manual.
 - Massachusetts Approval G3-0816-23.

WILLIAMS
Comfort Products

facebook.com/WilliamsProducts • linkedin.com/company/williams • twitter.com/WilliamsProduct • instagram.com/williamsproducts
youtube.com/user/WilliamsProducts

© Williams Comfort Products

Printed in USA

Subject to Change without Notice

250 West Laurel Street
Colton, California 92324 USA
T | 909.825.0993
F | 909.824.8009



L1074, 7/17