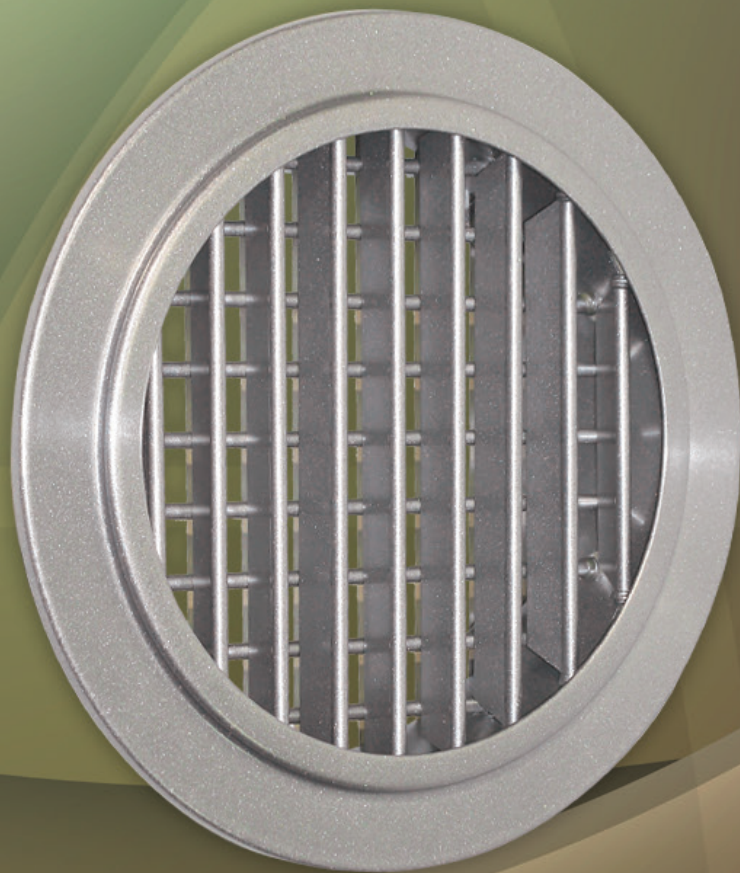




AIRCONCEPTS

AIR DISTRIBUTION PRODUCTS



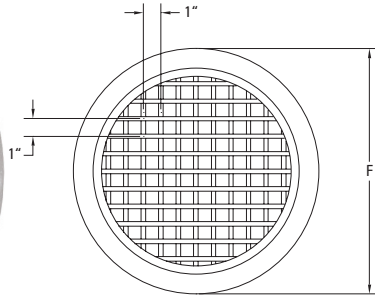
RDD SERIES

RDD

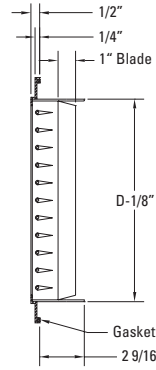
Wall/Ceiling Mount



US Patent



*Concealed mounting system
*Optional flex duct collar available

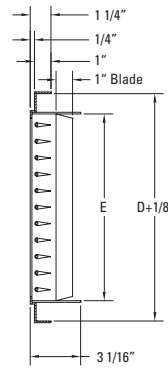
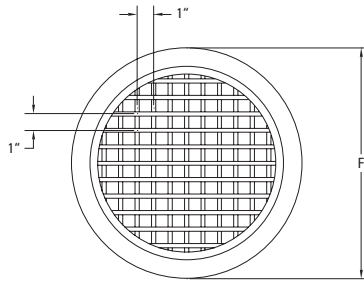


RDD Dimensions in Inches

| MODEL | SIZE | D | F |
|--------|------|----|--------|
| RDD-06 | 6 | 6 | 8 1/4 |
| RDD-08 | 8 | 8 | 10 1/4 |
| RDD-10 | 10 | 10 | 12 1/4 |
| RDD-12 | 12 | 12 | 14 1/4 |
| RDD-14 | 14 | 14 | 16 1/4 |
| RDD-16 | 16 | 16 | 18 1/4 |
| RDD-18 | 18 | 18 | 20 1/4 |
| RDD-20 | 20 | 20 | 22 1/4 |
| RDD-22 | 22 | 22 | 24 1/4 |
| RDD-24 | 24 | 24 | 26 1/4 |

RDD-RD

Exposed Round Duct

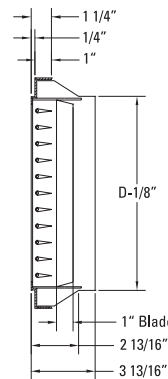
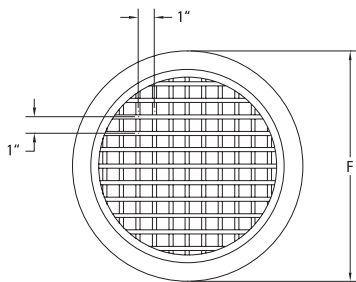


RDD-RD Dimensions in Inches

| MODEL | SIZE | D | E | F |
|-----------|------|----|----|--------|
| RDD-06-RD | 6 | 8 | 6 | 8 1/4 |
| RDD-08-RD | 8 | 10 | 8 | 10 1/4 |
| RDD-10-RD | 10 | 12 | 10 | 12 1/4 |
| RDD-12-RD | 12 | 14 | 12 | 14 1/4 |
| RDD-14-RD | 14 | 16 | 14 | 16 1/4 |
| RDD-16-RD | 16 | 18 | 16 | 18 1/4 |
| RDD-18-RD | 18 | 20 | 18 | 20 1/4 |
| RDD-20-RD | 20 | 22 | 20 | 22 1/4 |
| RDD-22-RD | 22 | 24 | 22 | 24 1/4 |
| RDD-24-RD | 24 | 26 | 24 | 26 1/4 |

RDD-RR

Exposed Round Duct



RDD-RR Dimensions in Inches

| MODEL | SIZE | D | F |
|-----------|------|----|--------|
| RDD-06-RR | 6 | 6 | 8 1/4 |
| RDD-08-RR | 8 | 8 | 10 1/4 |
| RDD-10-RR | 10 | 10 | 12 1/4 |
| RDD-12-RR | 12 | 12 | 14 1/4 |
| RDD-14-RR | 14 | 14 | 16 1/4 |
| RDD-16-RR | 16 | 16 | 18 1/4 |
| RDD-18-RR | 18 | 18 | 20 1/4 |
| RDD-20-RR | 20 | 20 | 22 1/4 |
| RDD-22-RR | 22 | 22 | 24 1/4 |
| RDD-24-RR | 24 | 24 | 26 1/4 |

High Velocity Air Outlet

- Double deflection design
- Adjustable vertical and horizontal blades
- Long air throws
- Wide dispersion patterns

Construction

- Heavy gauge aluminum
- 1" Extruded blades, 1" spacing

Finishes

- Standard: #52 White powder coat
- Optional standard: #00 Mill #12 Anodized powder coat
- #42 Gloss black powder coat
- #43 Flat black powder coat
- #62 Grey prime powder coat
- #72 Silver metallic powder coat
- Custom colors available

| MODEL | Duct Velocity Velocity Pressure | 400 0.010 | 600 0.022 | 800 0.040 | 1000 0.062 | 1200 0.090 | 1400 0.122 | 1600 0.160 |
|---------------|--|----------------------|----------------------|----------------------|-----------------------|-----------------------|-----------------------|-----------------------|
| RDD-06 | CFM | 79 | 118 | 157 | 196 | 236 | 275 | 314 |
| | Static Pressure | 0.023 | 0.052 | 0.081 | 0.148 | 0.205 | 0.282 | 0.358 |
| | NC | <15 | <15 | 18 | 26 | 32 | 38 | 43 |
| | Projection | 6-12-24 | 8-16-32 | 10-18-30 | 12-20-36 | 16-26-38 | 20-28-42 | 22-30-44 |
| RDD-08 | CFM | 140 | 209 | 279 | 349 | 419 | 489 | 559 |
| | Static Pressure | 0.018 | 0.042 | 0.074 | 0.117 | 0.167 | 0.228 | 0.295 |
| | NC | <15 | <15 | 16 | 24 | 30 | 36 | 41 |
| | Projection | 7-14-28 | 10-20-34 | 14-28-42 | 18-32-46 | 22-36-50 | 26-38-52 | 26-42-58 |
| RDD-10 | CFM | 218 | 327 | 436 | 545 | 655 | 764 | 873 |
| | Static Pressure | 0.016 | 0.037 | 0.065 | 0.102 | 0.146 | 0.200 | 0.260 |
| | NC | <15 | <15 | 15 | 23 | 29 | 35 | 39 |
| | Projection | 8-16-30 | 10-20-40 | 18-34-48 | 22-40-58 | 26-44-60 | 32-48-66 | 38-52-72 |
| RDD-12 | CFM | 314 | 471 | 628 | 786 | 943 | 1100 | 1257 |
| | Static Pressure | 0.015 | 0.034 | 0.059 | 0.094 | 0.133 | 0.183 | 0.237 |
| | NC | <15 | <15 | 15 | 22 | 28 | 34 | 38 |
| | Projection | 9-18-36 | 15-30-52 | 20-40-60 | 26-48-68 | 32-52-76 | 36-58-84 | 42-62-96 |
| RDD-14 | CFM | 428 | 641 | 855 | 1069 | 1283 | 1497 | 1711 |
| | Static Pressure | 0.014 | 0.032 | 0.056 | 0.085 | 0.127 | 0.171 | 0.223 |
| | NC | <15 | <15 | 15 | 22 | 28 | 34 | 38 |
| | Projection | 10-20-40 | 18-36-60 | 22-44-70 | 30-56-78 | 38-62-90 | 44-66-96 | 48-72-106 |
| RDD-16 | CFM | 559 | 838 | 1117 | 1396 | 1676 | 1955 | 2234 |
| | Static Pressure | 0.014 | 0.030 | 0.053 | 0.084 | 0.120 | 0.163 | 0.212 |
| | NC | <15 | <15 | 15 | 22 | 28 | 34 | 38 |
| | Projection | 12-24-48 | 18-36-68 | 28-56-84 | 36-65-92 | 44-70-104 | 52-78-110 | 58-82-116 |
| RDD-18 | CFM | 707 | 1060 | 1414 | 1767 | 2121 | 2474 | 2828 |
| | Static Pressure | 0.013 | 0.030 | 0.051 | 0.080 | 0.115 | 0.158 | 0.205 |
| | NC | <15 | <15 | 16 | 23 | 29 | 35 | 39 |
| | Projection | 14-28-56 | 22-44-78 | 32-64-92 | 40-74-104 | 52-80-114 | 58-86-122 | 65-92-130 |
| RDD-20 | CFM | 873 | 1309 | 1746 | 2182 | 2618 | 3055 | 3491 |
| | Static Pressure | 0.013 | 0.029 | 0.050 | 0.078 | 0.112 | 0.152 | 0.197 |
| | NC | <15 | <15 | 16 | 23 | 29 | 35 | 39 |
| | Projection | 16-32-64 | 26-52-88 | 35-68-104 | 45-80-114 | 56-88-128 | 66-96-136 | 72-100-145 |
| RDD-22 | CFM | 1056 | 1584 | 2112 | 2640 | 3168 | 3696 | 4224 |
| | Static Pressure | 0.012 | 0.028 | 0.048 | 0.076 | 0.108 | 0.148 | 0.192 |
| | NC | <15 | <15 | 17 | 24 | 30 | 36 | 40 |
| | Projection | 16-34-68 | 28-56-96 | 38-74-110 | 48-88-126 | 60-98-142 | 74-110-156 | 78-112-160 |
| RDD-24 | CFM | 1257 | 1885 | 2514 | 3142 | 3770 | 4399 | 5027 |
| | Static Pressure | 0.012 | 0.027 | 0.047 | 0.075 | 0.107 | 0.144 | 0.189 |
| | NC | <15 | <15 | 18 | 25 | 32 | 37 | 41 |
| | Projection | 18-36-72 | 30-60-105 | 42-86-122 | 52-96-136 | 65-108-150 | 75-114-160 | 84-122-168 |

performance data based on ASHRAE 70-06

Projection: Projection distance [THROW] in feet from the Nozzle discharge at which the maximum velocity has been reduced to specified terminal velocity [Vt].

Terminal Velocity: Maximum velocity [Vt] in feet per minute at the specified distance from the outlet face [THROW] 200 fpm, 100fpm and 50 fpm respectively.

Airflow CFM: Standard air density and isothermal conditions.

Static Pressure: Inches of water gauge required.

Noise Criteria: Noise criteria [NC] curve which is not exceeded with a Room Attenuation of 10db and based on Sound Power Level Re: 10-12 watts.

performance values for various deflection angles

| Deflection Angle | 0° | 10° | 20° | 30° | 40° |
|---------------------------|-----------|------------|------------|------------|------------|
| Total Pressure [times] | 1.0 | 1.2 | 1.4 | 1.9 | 2.4 |
| Throw Projection [times] | 1.0 | 0.9 | 0.8 | 0.7 | 0.6 |
| Noise Criteria – NC [add] | +0 | +3 | +7 | +11 | +16 |

