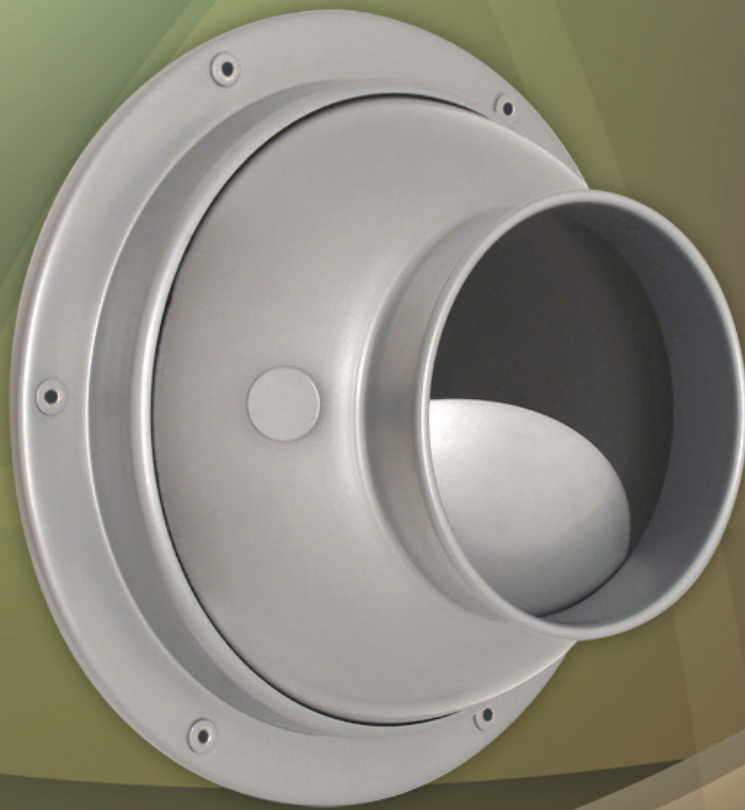


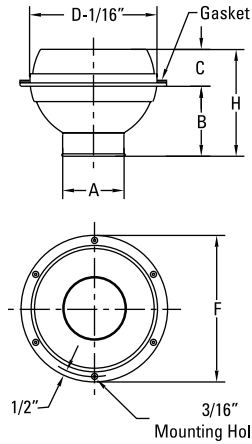
AIRCONCEPTS

AIR DISTRIBUTION PRODUCTS

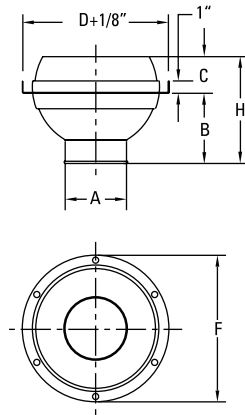


APL SERIES

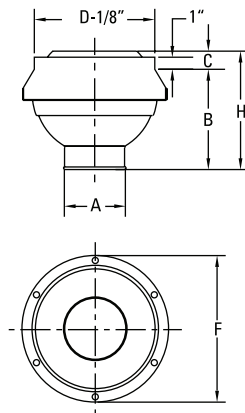
APL
Wall/Ceiling Mount



APL-RD
Exposed Round Duct



APL-RR
Exposed Round Duct



APL Dimensions in Inches

MODEL	SIZE	A	B	C	D	F	H
APL-03	3	1 5/8	1 3/4	15/16	3 1/8	5	2 11/16
APL-04	4	2	2 9/16	3/4	4	6	3 5/16
APL-06	6	3	3 1/16	1 7/16	6	8	4 1/2
APL-08	8	4 3/8	4 1/4	1 3/4	8	10	6
APL-10	10	5 3/4	5 1/2	2 7/8	10	12	8 3/8
APL-12	12	7 3/8	6	3	12	14	9
APL-14	14	8 5/8	7 1/8	4 1/8	14	16	11 1/4
APL-16	16	9 3/4	8 1/4	4 3/4	16	18	13
APL-18	18	10 1/2	9 1/2	4 1/4	18	20	13 3/4
APL-20	20	12 3/8	10 7/8	4 7/8	20	22	15 3/4

MOUNTING HOLES 3-[3"-4"] 4-[6"-8"] 6-[10"-16"] 8-[18"-20"]

APL-RD Dimensions in Inches

MODEL	SIZE	A	B	C	D	F	H
APL-04-RD	4	2	2 9/16	3/4	6	6	3 5/16
APL-06-RD	6	3	3 1/16	1 7/16	8	8	4 1/2
APL-08-RD	8	4 3/8	4 1/4	1 3/4	10	10	6
APL-10-RD	10	5 3/4	5 1/2	2 7/8	12	12	8 3/8
APL-12-RD	12	7 3/8	6	3	14	14	9
APL-14-RD	14	8 5/8	7 1/8	4 1/8	16	16	11 1/4
APL-16-RD	16	9 3/4	8 1/4	4 3/4	18	18	13
APL-18-RD	18	10 1/2	9 1/2	4 1/4	20	20	13 3/4
APL-20-RD	20	12 3/8	10 7/8	4 7/8	22	22	15 3/4

APL-RR Dimensions in Inches

MODEL	SIZE	A	B	C	D	F	H
APL-06-RR	6	3	5 9/16	1	6	8	6 9/16
APL-08-RR	8	4 3/8	6 3/4	1	8	10	7 3/4
APL-10-RR	10	5 3/4	8	1	10	12	9
APL-12-RR	12	7 3/8	8 1/2	1	12	14	9 1/2
APL-14-RR	14	8 5/8	9 5/8	1 5/8	14	16	11 1/4
APL-16-RR	16	9 3/4	10 3/4	2 1/4	16	18	13
APL-18-RR	18	10 1/2	12	1 3/4	18	20	13 3/4
APL-20-RR	20	12 3/8	13 3/8	2 3/8	20	22	15 3/4

Adjustability

- Easy Finger Tip Adjustment
- Directional Air Pattern Control:
- 70° Degree Global Rotation
- ±35° Degree Deflection
- 360° Degree Rotation

Construction

- Aluminum
- Foam Gasket

Finishes

- Standard: #52 White powder coat
- Optional standard: #00 Mill
- #10 Clear anodized
- #12 Anodized powder coat
- #42 Gloss black powder coat
- #43 Flat black powder coat
- #62 Grey prime powder coat
- #72 Silver metallic powder coat
- Custom colors available

APL-A

APL-A Dimensions in Inches

MODEL	SIZE	A	B	C	D	F	H
APL-04A	4	2	2 ⁹ / ₁₆	3/4	4	6	3 ⁵ / ₁₆
APL-06A	6	3	3 ¹ / ₁₆	1 ⁷ / ₁₆	6	8	4 ¹ / ₂
APL-08A	8	4 ³ / ₈	4 ¹ / ₄	1 ³ / ₄	8	10	6
APL-10A	10	5 ³ / ₄	5 ¹ / ₂	2 ⁷ / ₈	10	12	8 ³ / ₈
APL-12A	12	7 ³ / ₈	6	3	12	14	9
APL-14A	14	8 ⁵ / ₈	7 ¹ / ₈	4 ¹ / ₈	14	16	11 ¹ / ₄
APL-16A	16	9 ³ / ₄	8 ¹ / ₄	4 ³ / ₄	16	18	13
APL-18A	18	10 ¹ / ₂	9 ¹ / ₂	4 ¹ / ₄	18	20	13 ³ / ₄
APL-20A	20	12 ³ / ₈	10 ⁷ / ₈	4 ⁷ / ₈	20	22	15 ³ / ₄
MOUNTING HOLES		3-[4"]	4-[6"-8"]	6-[10"-16"]	8-[18"-20"]		

APL-A-RD Dimensions in Inches

MODEL	SIZE	A	B	C	D	F	H
APL-04A-RD	4	2	2 ⁹ / ₁₆	3/4	6	6	3 ⁵ / ₁₆
APL-06A-RD	6	3	3 ¹ / ₁₆	1 ⁷ / ₁₆	8	8	4 ¹ / ₂
APL-08A-RD	8	4 ³ / ₈	4 ¹ / ₄	1 ³ / ₄	10	10	6
APL-10A-RD	10	5 ³ / ₄	5 ¹ / ₂	2 ⁷ / ₈	12	12	8 ³ / ₈
APL-12A-RD	12	7 ³ / ₈	6	3	14	14	9
APL-14A-RD	14	8 ⁵ / ₈	7 ¹ / ₈	4 ¹ / ₈	16	16	11 ¹ / ₄
APL-16A-RD	16	9 ³ / ₄	8 ¹ / ₄	4 ³ / ₄	18	18	13
APL-18A-RD	18	10 ¹ / ₂	9 ¹ / ₂	4 ¹ / ₄	20	20	13 ³ / ₄
APL-20A-RD	20	12 ³ / ₈	10 ⁷ / ₈	4 ⁷ / ₈	22	22	15 ³ / ₄

APL-A-RR Dimensions in Inches

MODEL	SIZE	A	B	C	D	F	H
APL-06A-RR	6	3	5 ⁹ / ₁₆	1	6	8	6 ⁹ / ₁₆
APL-08A-RR	8	4 ³ / ₈	6 ³ / ₄	1	8	10	7 ³ / ₄
APL-10A-RR	10	5 ³ / ₄	8	1	10	12	9
APL-12A-RR	12	7 ³ / ₈	8 ¹ / ₂	1	12	14	9 ¹ / ₂
APL-14A-RR	14	8 ⁵ / ₈	9 ⁵ / ₈	1 ⁵ / ₈	14	16	11 ¹ / ₄
APL-16A-RR	16	9 ³ / ₄	10 ³ / ₄	2 ¹ / ₄	16	18	13
APL-18A-RR	18	10 ¹ / ₂	12	1 ³ / ₄	18	20	13 ³ / ₄
APL-20A-RR	20	12 ³ / ₈	13 ³ / ₈	2 ³ / ₈	20	22	15 ³ / ₄

Adjustability

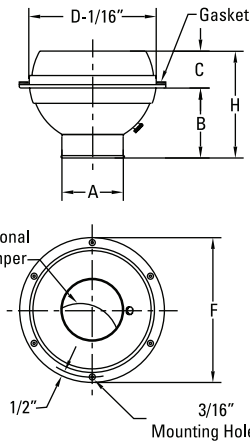
Easy Finger Tip Adjustment
 Directional Air Pattern Control:
 70° Degree Global Rotation
 ±35° Degree Deflection
 360° Degree Rotation

Construction

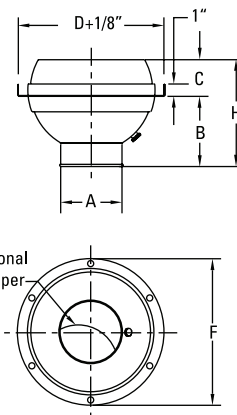
Stainless Steel Damper Hardware
 Aluminum
 Foam Gasket

Finishes

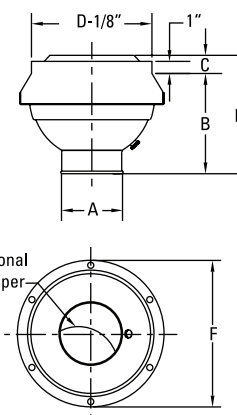
Standard: #52 White powder coat
 Optional standard: #00 Mill
 #10 Clear anodized
 #12 Anodized powder coat
 #42 Gloss black powder coat
 #43 Flat black powder coat
 #62 Grey prime powder coat
 #72 Silver metallic powder coat
 Custom colors available



APL-A
Wall/Ceiling Mount



APL-A-RD
Exposed Round Duct



APL-A-RR
Exposed Round Duct

MODEL	Nozzle Velocity (FPM)	1000	1500	2000	2500	3000	3500	4000
APL-03	CFM	14	22	29	36	43	50	58
	Static Pressure	0.03	0.07	0.13	0.20	0.28	0.39	0.50
	NC	<15	<15	<15	19	23	26	30
	Projection	2-4-8	3-6-13	4-8-15	5-11-16	6-12-17	7-13-20	8-14-21
APL-04	CFM	22	33	44	55	66	77	88
	Static Pressure	0.03	0.07	0.13	0.20	0.28	0.39	0.50
	NC	<15	<15	<15	19	23	26	30
	Projection	3-6-12	4-8-17	6-12-23	8-16-24	9-18-27	10-21-30	12-22-32
APL-06	CFM	49	74	98	123	147	172	196
	Static Pressure	0.05	0.12	0.22	0.34	0.49	0.66	0.86
	NC	<15	<15	15	21	25	29	33
	Projection	4-8-16	6-12-23	8-16-27	10-20-30	12-21-32	14-25-36	16-26-38
APL-08	CFM	104	157	209	261	313	365	418
	Static Pressure	0.06	0.14	0.24	0.38	0.53	0.70	0.92
	NC	<15	<15	17	24	30	35	38
	Projection	6-11-23	8-17-34	11-23-39	14-28-44	17-31-46	20-35-52	23-38-55
APL-10	CFM	180	270	361	451	541	631	721
	Static Pressure	0.07	0.15	0.25	0.39	0.56	0.74	0.96
	NC	<15	<15	21	29	35	40	45
	Projection	7-15-30	11-22-45	15-30-51	19-37-57	22-41-61	26-47-69	30-50-72
APL-12	CFM	297	445	593	742	890	1038	1187
	Static Pressure	0.07	0.15	0.26	0.40	0.58	0.78	1.01
	NC	<15	15	24	32	38	44	47
	Projection	10-19-38	14-29-57	19-38-65	24-48-74	29-52-79	33-60-88	38-64-93
APL-14	CFM	406	609	811	1014	1217	1420	1623
	Static Pressure	0.07	0.15	0.26	0.41	0.58	0.79	1.02
	NC	<15	15	25	33	39	44	48
	Projection	11-22-45	17-33-67	22-45-76	28-56-86	33-61-91	39-70-103	45-75-108
APL-16	CFM	518	778	1036	1296	1555	1815	2074
	Static Pressure	0.07	0.14	0.26	0.41	0.58	0.80	1.03
	NC	<15	16	26	33	39	44	49
	Projection	13-25-50	19-38-76	25-50-86	32-63-97	38-69-103	44-79-117	50-84-122
APL-18	CFM	601	902	1202	1503	1804	2105	2406
	Static Pressure	0.06	0.13	0.24	0.37	0.54	0.74	0.96
	NC	<15	16	26	33	39	44	49
	Projection	14-27-54	20-41-81	27-54-105	34-68-110	41-74-111	47-85-126	54-91-132
APL-20	CFM	835	1253	1670	2088	2506	2924	3341
	Static Pressure	0.06	0.12	0.22	0.34	0.49	0.68	0.88
	NC	<15	17	27	34	40	46	51
	Projection	16-32-64	24-48-96	32-64-110	40-80-123	48-87-131	56-100-148	64-107-155

performance data based on ASHRAE 70-06

Airflow CFM: Standard air density and isothermal conditions.

Noise Criteria: Noise criteria [NC] curve which is not exceeded with a Room Attenuation of 10db and based on Sound Power LevelRe: 10-12 watts.

Static Pressure: Inches of water gauge required.

Projection: Projection distance [THROW] in feet from the Nozzle discharge at which the maximum velocity has been reduced to specified terminal velocity [Vt].

Nozzle Velocity: Nozzle Discharge Velocity in feet per minute [fpm].

Terminal Velocity: Maximum velocity [Vt] in feet per minute at the specified distance from the outlet face [THROW] 400 fpm, 200 fpm, and 100 fpm respectively.

