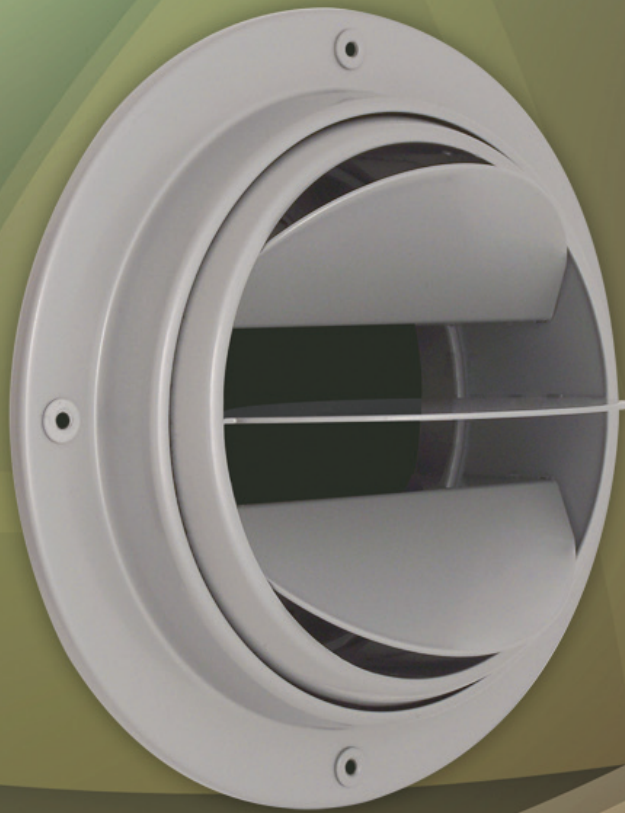


AIRCONCEPTS

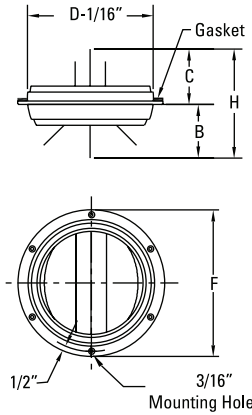
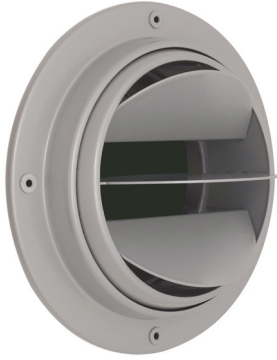
AIR DISTRIBUTION PRODUCTS



APLD SERIES

APLD

Wall/Ceiling Mount



* Diffused Air Pattern Shown

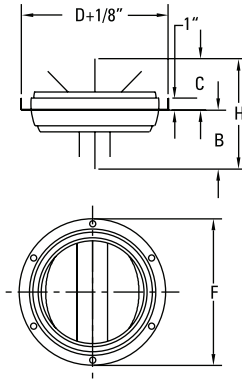
*Available in panel series

APLD Dimensions in Inches

MODEL	SIZE	B	C	D	F	H	MTG HOLES
APLD-08	8	3 5/8	3 5/8	8	10	7 1/4	4
APLD-10	10	4 5/8	4 5/8	10	12	9 1/4	6
APLD-12	12	5 3/8	5 3/8	12	14	10 3/4	6

APLD-RD

Exposed Round Duct



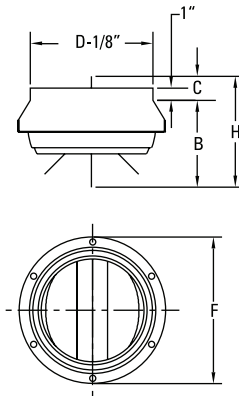
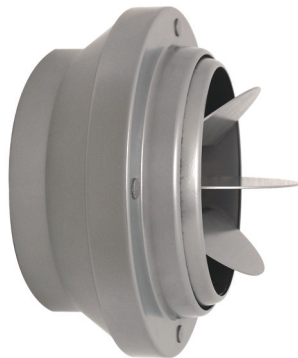
* Jet Air Pattern Shown

APLD-RD Dimensions in Inches

MODEL	SIZE	B	C	D	F	H
APLD-08-RD	8	3 5/8	3 5/8	10	10	7 1/4
APLD-10-RD	10	4 5/8	4 5/8	12	12	9 1/4
APLD-12-RD	12	5 3/8	5 3/8	14	14	10 3/4

APLD-RR

Exposed Round Duct



* Diffused Air Pattern Shown

APLD-RR Dimensions in Inches

MODEL	SIZE	B	C	D	F	H
APLD-08-RR	8	6 1/8	1 1/8	8	10	7 1/4
APLD-10-RR	10	7 1/8	2 1/8	10	12	9 1/4
APLD-12-RR	12	7 7/8	2 7/8	12	14	10 3/4

Adjustability

- Easy Finger Tip Adjustment
- Reversible Air Pattern
- Directional Air Pattern Control:
- 70° Degree Global Rotation
- ±35° Degree Deflection
- 360° Degree Rotation

Construction

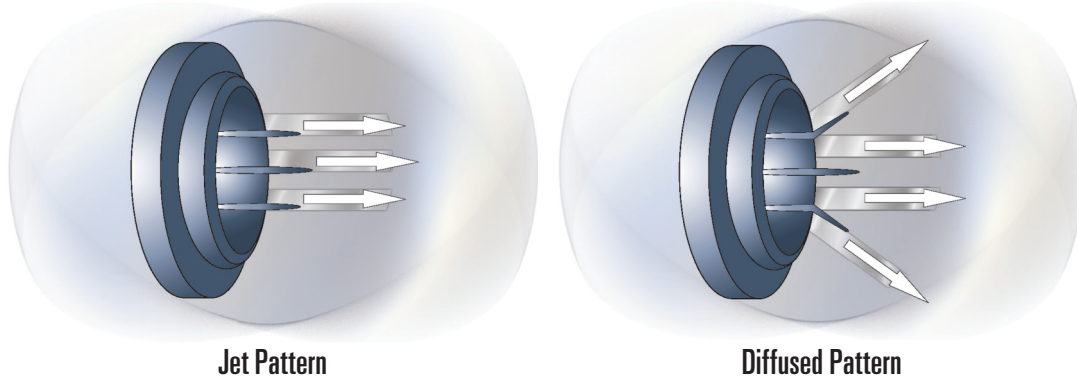
- Aluminum
- Foam Gasket

Finishes

- Standard: #52 White powder coat
- Optional standard: #00 Mill
- #12 Anodized powder coat
- #42 Gloss black powder coat
- #43 Flat black powder coat
- #62 Grey prime powder coat
- #72 Silver metallic powder coat
- Custom colors available

Reversible Air Pattern

The **APLD-Series** has a reversible air pattern that is easily adjusted to provide a jet air pattern or a diffused air pattern.



MODEL	Nozzle Velocity (FPM)	400	600	800	1000	1200
APLD-08	CFM	140	209	279	349	419
	Static Pressure	0.08	0.18	0.31	0.49	0.71
	NC	16	24	34	38	43
	Projection [Jet]	15-23-34	19-28-43	23-34-52	26-40-60	28-44-67
	Projection [Diffused]	6-13-21	9-17-25	11-21-31	15-23-35	17-25-39
APLD-10	CFM	222	331	443	553	664
	Static Pressure	0.08	0.18	0.31	0.48	0.70
	NC	17	28	34	41	44
	Projection [Jet]	19-28-46	23-35-56	28-46-65	31-50-75	35-54-84
	Projection [Diffused]	8-16-26	12-22-32	16-27-39	20-30-44	22-33-49
APLD-12	CFM	314	471	628	785	942
	Static Pressure	0.08	0.17	0.30	0.47	0.68
	NC	19	30	36	43	46
	Projection [Jet]	23-34-54	28-42-63	34-54-77	38-60-89	42-64-102
	Projection [Diffused]	9-19-32	15-28-42	19-32-48	24-36-56	28-43-62

performance data based on ASHRAE 70-06

Airflow CFM: Standard air density and isothermal conditions.

Static Pressure: Inches of water gauge required.

Nozzle Velocity: Nozzle Discharge Velocity in feet per minute [fpm].

Noise Criteria: Noise criteria [NC] curve which is not exceeded with a Room Attenuation of 10db and based on Sound Power Level Re: 10-12 watts.

Projection: Projection distance [THROW] in feet from the Nozzle discharge at which the maximum velocity has been reduced to specified terminal velocity [Vt].

Terminal Velocity: Maximum velocity [Vt] in feet per minute at the specified distance from the outlet face [THROW] 200 fpm, 100 fpm, and 50 fpm respectively.