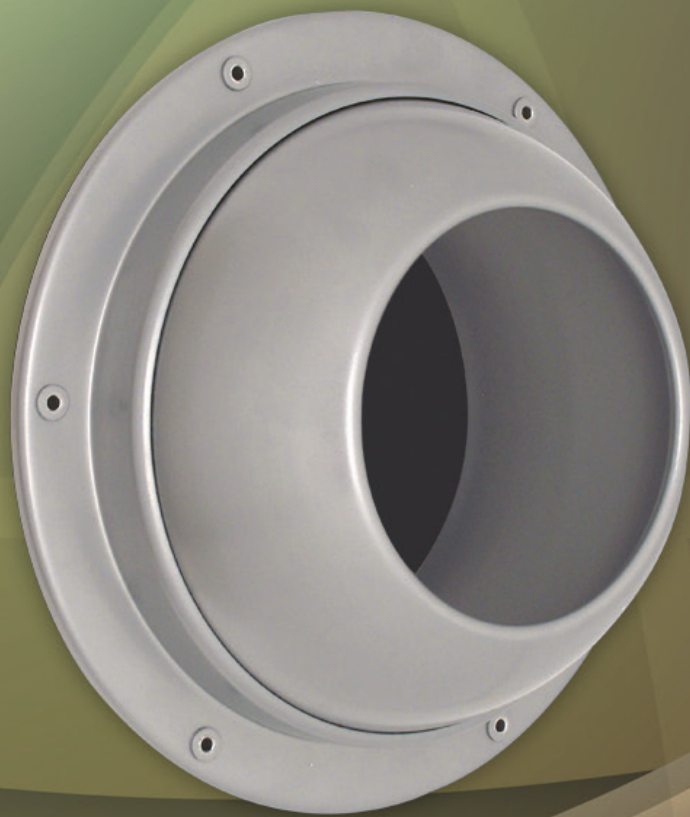


AIRCONCEPTS

AIR DISTRIBUTION PRODUCTS

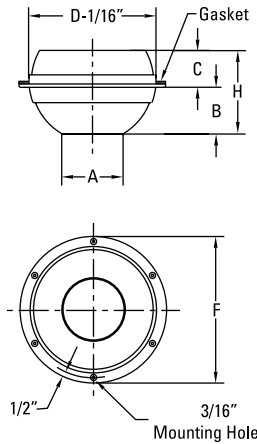


APLS SERIES

APLS Wall/Ceiling Mount



*Available in panel series

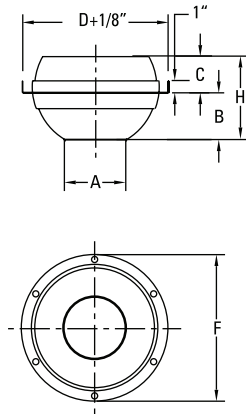


APLS Dimensions in Inches

MODEL	SIZE	A	B	C	D	F	H
APLS-04	4	2	1 ¹³ / ₁₆	³ / ₄	4	6	2 ⁹ / ₁₆
APLS-06	6	3	2 ⁵ / ₈	1 ¹ / ₈	6	8	3 ³ / ₄
APLS-08	8	4 ³ / ₈	3 ⁵ / ₈	1 ³ / ₄	8	10	5 ³ / ₈
APLS-10	10	5 ³ / ₄	4 ³ / ₄	2 ¹ / ₂	10	12	7 ¹ / ₄
APLS-12	12	7 ³ / ₈	5	3	12	14	8
APLS-14	14	8 ⁵ / ₈	5 ³ / ₄	4 ¹ / ₈	14	16	9 ⁷ / ₈
APLS-16	16	9 ³ / ₄	6 ¹ / ₂	4 ⁵ / ₈	16	18	11 ¹ / ₈
APLS-18	18	10 ¹ / ₂	8	4 ⁵ / ₈	18	20	12 ⁵ / ₈
APLS-20	20	12 ³ / ₈	7 ¹ / ₂	5	20	22	12 ¹ / ₂

MOUNTING HOLES 3-[4"] 4-[6"-8"] 6-[10"-16"] 8-[18"-20"]

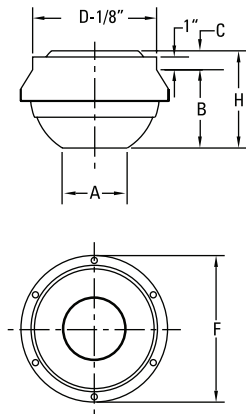
APLS-RD Exposed Round Duct



APLS-RD Dimensions in Inches

MODEL	SIZE	A	B	C	D	F	H
APLS-06-RD	6	3	2 ¹ / ₁₆	1 ⁷ / ₁₆	8	8	3 ¹ / ₂
APLS-08-RD	8	4 ³ / ₈	3 ¹ / ₁₆	1 ³ / ₄	10	10	4 ¹³ / ₁₆
APLS-10-RD	10	5 ³ / ₄	4 ¹ / ₁₆	2 ⁷ / ₈	12	12	6 ¹⁵ / ₁₆
APLS-12-RD	12	7 ³ / ₈	4 ¹ / ₄	3	14	14	7 ¹ / ₄
APLS-14-RD	14	8 ⁵ / ₈	5 ¹ / ₈	4 ¹ / ₈	16	16	9 ¹ / ₄
APLS-16-RD	16	9 ³ / ₄	6 ¹ / ₈	4 ³ / ₄	18	18	10 ⁷ / ₈
APLS-18-RD	18	10 ¹ / ₂	7 ¹ / ₈	4 ¹ / ₄	20	20	11 ³ / ₈
APLS-20-RD	20	12 ³ / ₈	7 ³ / ₈	4 ⁷ / ₈	22	22	12 ¹ / ₄

APLS-RR Exposed Round Duct



APLS-RR Dimensions in Inches

MODEL	SIZE	A	B	C	D	F	H
APLS-06-RR	6	3	4 ⁹ / ₁₆	1	6	8	5 ⁹ / ₁₆
APLS-08-RR	8	4 ³ / ₈	5 ⁹ / ₁₆	1	8	10	6 ⁹ / ₁₆
APLS-10-RR	10	5 ³ / ₄	6 ⁹ / ₁₆	1	10	12	7 ⁹ / ₁₆
APLS-12-RR	12	7 ³ / ₈	6 ³ / ₄	1	12	14	7 ³ / ₄
APLS-14-RR	14	8 ⁵ / ₈	7 ⁵ / ₈	1 ⁵ / ₈	14	16	9 ¹ / ₄
APLS-16-RR	16	9 ³ / ₄	8 ⁵ / ₈	2 ¹ / ₄	16	18	10 ⁷ / ₈
APLS-18-RR	18	10 ¹ / ₂	9 ⁵ / ₈	1 ³ / ₄	18	20	11 ³ / ₈
APLS-20-RR	20	12 ³ / ₈	9 ⁷ / ₈	2 ³ / ₈	20	22	12 ¹ / ₄

Adjustability

- Easy Finger Tip Adjustment
- Directional Air Pattern Control:
- 70° Degree Global Rotation
- ±35° Degree Deflection
- 360° Degree Rotation

Construction

- Aluminum
- Foam Gasket

Finishes

- Standard: #52 White powder coat
- Optional standard: #00 Mill
- #10 Clear anodized
- #12 Anodized powder coat
- #42 Gloss black powder coat
- #43 Flat black powder coat
- #62 Grey prime powder coat
- #72 Silver metallic powder coat
- Custom colors available

MODEL	Nozzle Velocity (FPM)	1000	1500	1750	2000	2250	2500	3000
APLS-04	CFM	22	33	38	44	49	55	66
	Static Pressure	0.05	0.11	0.15	0.21	0.26	0.31	0.46
	NC	<15	<15	17	21	24	27	29
	Projection	3-6-12	4-8-17	5-10-20	6-12-23	7-14-24	8-16-24	9-18-27
APLS-06	CFM	49	74	86	98	110	123	147
	Static Pressure	0.06	0.15	0.20	0.27	0.34	0.42	0.58
	NC	<15	17	20	23	25	27	31
	Projection	4-8-16	6-12-23	7-14-27	8-16-27	9-18-29	10-20-30	12-21-32
APLS-08	CFM	104	157	183	209	236	261	313
	Static Pressure	0.07	0.17	0.23	0.31	0.39	0.47	0.67
	NC	<15	17	20	23	26	30	36
	Projection	6-11-23	8-17-34	9-19-38	11-23-39	12-24-42	14-28-44	17-31-46
APLS-10	CFM	180	270	315	361	405	451	541
	Static Pressure	0.07	0.18	0.25	0.33	0.42	0.51	0.73
	NC	<15	19	22	26	30	34	39
	Projection	7-15-30	11-22-45	13-26-52	15-30-51	17-34-55	19-37-57	22-41-61
APLS-12	CFM	297	445	519	593	668	742	890
	Static Pressure	0.08	0.19	0.26	0.34	0.44	0.53	0.75
	NC	<15	20	25	31	34	38	43
	Projection	10-19-38	14-29-57	16-33-66	19-38-65	21-42-70	24-48-74	29-52-78
APLS-14	CFM	406	609	711	811	915	1014	1217
	Static Pressure	0.08	0.20	0.28	0.36	0.46	0.56	0.78
	NC	<15	24	28	33	36	39	44
	Projection	11-22-45	17-33-67	20-39-78	22-45-76	25-50-82	28-56-86	33-61-91
APLS-16	CFM	518	778	908	1036	1167	1296	1555
	Static Pressure	0.08	0.20	0.28	0.36	0.46	0.56	0.78
	NC	<15	24	28	33	36	39	44
	Projection	13-25-50	19-38-76	22-44-87	25-50-86	28-56-92	32-63-97	38-69-103
APLS-18	CFM	601	902	1052	1202	1353	1503	1804
	Static Pressure	0.07	0.19	0.26	0.33	0.43	0.52	0.74
	NC	16	25	29	34	36	39	45
	Projection	14-27-54	20-41-81	23-47-93	27-54-105	30-60-107	34-68-110	41-74-111
APLS-20	CFM	835	1253	1492	1670	1880	2088	2506
	Static Pressure	0.07	0.18	0.23	0.31	0.39	0.48	0.70
	NC	16	25	29	34	36	39	45
	Projection	16-32-64	24-48-96	28-56-112	32-64-110	36-72-115	40-80-123	48-87-131

performance data based on ASHRAE 70-06

Airflow CFM: Standard air density and isothermal conditions.

Noise Criteria: Noise criteria [NC] curve which is not exceeded with a Room Attenuation of 10db and based on Sound Power Level Re: 10-12 watts.

Static Pressure: Inches of water gauge required.

Projection: Projection distance [THROW] in feet from the Nozzle discharge at which the maximum velocity has been reduced to specified terminal velocity [Vt].

Nozzle Velocity: Nozzle Discharge Velocity in feet per minute [fpm].

Terminal Velocity: Maximum velocity [Vt] in feet per minute at the specified distance from the outlet face [THROW] 400 fpm, 200 fpm, and 100 fpm respectively.