

AIRCONCEPTS

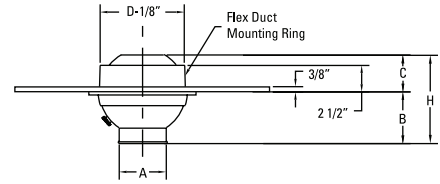
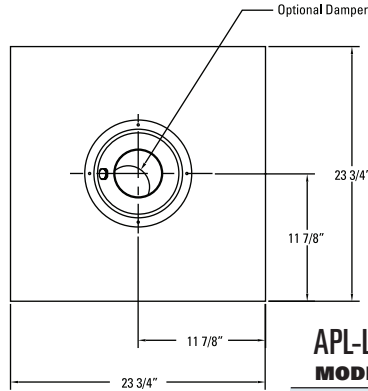
AIR DISTRIBUTION PRODUCTS



APL PANEL SERIES

APL-Panel

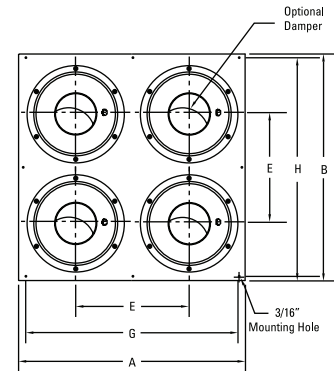
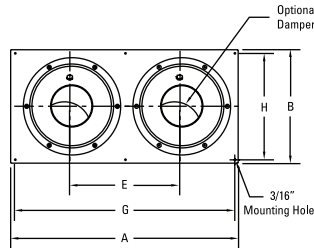
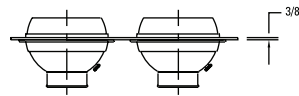
APL-LI Lay In Panel



APL-LI Dimensions in Inches

MODEL	SIZE	A	B	C	D	H
APL-06 / 06A-LI	6	3	3 ³ / ₈	2 ¹ / ₂	6	5 ⁷ / ₈
APL-08 / 08A-LI	8	4 ³ / ₈	4 ⁹ / ₁₆	2 ¹ / ₂	8	7 ¹ / ₁₆
APL-10 / 10A-LI	10	5 ³ / ₄	5 ¹³ / ₁₆	2 ⁹ / ₁₆	10	8 ³ / ₈
APL-12 / 12A-LI	12	7 ³ / ₈	6 ⁵ / ₁₆	2 ¹¹ / ₁₆	12	9
APL-14 / 14A-LI	14	8 ⁵ / ₈	7 ⁷ / ₁₆	3 ¹³ / ₁₆	14	11 ¹ / ₄
APL-16 / 16A-LI	16	9 ³ / ₄	8 ⁹ / ₁₆	4 ⁷ / ₁₆	16	13
APL-18 / 18A-LI	18	10 ¹ / ₂	9 ¹³ / ₁₆	3 ¹⁵ / ₁₆	18	13 ³ / ₄
APL-20 / 20A-LI	20	12 ³ / ₈	11 ³ / ₁₆	4 ⁹ / ₁₆	20	15 ³ / ₄

APL-P2R Panel Wall/Ceiling Mount



APL-Panel Dimensions in Inches

MODEL	SIZE	#PER PANEL	A	B	DUCT SIZE	E	G	H
APL-06 / 06A-P2R	6	2	18	10	16 X 8	9 ¹ / ₂	15	9
APL-08 / 08A-P2R	8	2	24	12	22 X 10	11 ¹ / ₂	21	11
APL-10 / 10A-P2R	10	2	28	14	26 X 12	13 ¹ / ₂	25	13
APL-12 / 12A-P2R	12	2	32	16	30 X 14	15 ¹ / ₂	29	15
APL-06 / 06A-P4S	6	4	18	18	16 X 16	9 ¹ / ₂	15	17
APL-08 / 08A-P4S	8	4	24	24	22 X 22	11 ¹ / ₂	21	23
APL-10 / 10A-P4S	10	4	28	28	26 X 26	13 ¹ / ₂	25	27
APL-12 / 12A-P4S	12	4	32	32	30 X 30	15 ¹ / ₂	29	31

APL-P4S Panel Wall/Ceiling Mount



Adjustability

- Easy Finger Tip Adjustment
- Directional Air Pattern Control:
- 70° Degree Global Rotation
- ±35° Degree Deflection
- 360° Degree Rotation

Construction

- Aluminum
- Foam Gasket

Finishes

- Standard: #52 White powder coat
- Optional standard: #00 Mill
- #10 Clear anodized
- #12 Anodized powder coat
- #42 Gloss black powder coat
- #43 Flat black powder coat
- #62 Grey prime powder coat
- #72 Silver metallic powder coat
- Custom colors available

MODEL	Nozzle Velocity (FPM)	1000	1500	2000	2500	3000	3500	4000
APL-03	CFM	14	22	29	36	43	50	58
	Static Pressure	0.03	0.07	0.13	0.20	0.28	0.39	0.50
	NC	<15	<15	<15	19	23	26	30
	Projection	2-4-8	3-6-11	3-7-15	4-9-16	5-11-18	6-13-19	8-17-22
APL-04	CFM	22	33	44	55	66	77	88
	Static Pressure	0.03	0.07	0.13	0.20	0.28	0.39	0.50
	NC	<15	<15	<15	19	23	26	30
	Projection	2-5-10	3-6-12	4-9-15	5-11-17	6-13-19	7-15-20	9-18-23
APL-06	CFM	49	74	98	123	147	172	196
	Static Pressure	0.05	0.12	0.22	0.34	0.49	0.66	0.86
	NC	<15	<15	15	21	25	29	33
	Projection	3-5-10	4-7-13	5-10-17	6-12-18	7-14-19	9-15-20	10-16-22
APL-08	CFM	104	157	209	261	313	365	418
	Static Pressure	0.06	0.14	0.24	0.38	0.53	0.70	0.92
	NC	<15	<15	17	24	30	35	38
	Projection	4-7-15	5-11-18	7-15-23	9-17-25	11-19-27	13-21-29	15-23-32
APL-10	CFM	180	270	361	451	541	631	721
	Static Pressure	0.07	0.15	0.25	0.39	0.56	0.74	0.96
	NC	<15	<15	21	29	35	40	45
	Projection	5-9-18	7-14-24	9-19-30	12-23-32	15-25-36	17-27-38	19-30-43
APL-12	CFM	297	445	593	742	890	1038	1187
	Static Pressure	0.07	0.15	0.26	0.40	0.58	0.78	1.01
	NC	<15	15	24	32	38	44	47
	Projection	7-12-25	9-18-31	12-25-38	15-29-41	19-32-46	22-35-49	25-38-57
APL-14	CFM	406	609	811	1014	1217	1420	1623
	Static Pressure	0.07	0.15	0.26	0.41	0.58	0.79	1.02
	NC	<15	15	25	33	39	44	48
	Projection	8-14-29	11-21-36	14-29-45	17-34-48	22-37-54	25-41-57	29-45-64
APL-16	CFM	518	778	1036	1296	1555	1815	2074
	Static Pressure	0.07	0.14	0.26	0.41	0.58	0.80	1.03
	NC	<15	16	26	33	39	44	49
	Projection	8-16-30	11-19-35	13-23-43	16-27-46	20-34-52	25-39-56	30-42-62
APL-18	CFM	601	902	1202	1503	1804	2105	2406
	Static Pressure	0.06	0.13	0.24	0.37	0.54	0.74	0.96
	NC	<15	16	26	33	39	44	49
	Projection	9-18-33	13-24-37	15-26-43	18-32-50	24-36-54	27-40-60	31-45-66
APL-20	CFM	835	1253	1670	2088	2506	2924	3341
	Static Pressure	0.06	0.12	0.22	0.34	0.49	0.68	0.88
	NC	<15	17	27	34	40	46	51
	Projection	10-20-34	14-26-45	18-32-50	24-39-60	28-45-65	30-50-71	33-56-80

performance data based on ASHRAE 70-06

Airflow CFM: Standard air density and isothermal conditions.

Noise Criteria: Noise criteria [NC] curve which is not exceeded with a Room Attenuation of 10db and based on Sound Power LevelRe: 10-12 watts.

Static Pressure: Inches of water gauge required.

Projection: Projection distance [THROW] in feet from the Nozzle discharge at which the maximum velocity has been reduced to specified terminal velocity [Vt].

Nozzle Velocity: Nozzle Discharge Velocity in feet per minute [fpm].

Terminal Velocity: Maximum velocity [Vt] in feet per minute at the specified distance from the outlet face [THROW] 400 fpm, 200 fpm, and 100 fpm respectively.

