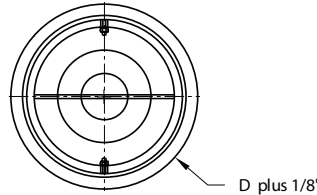
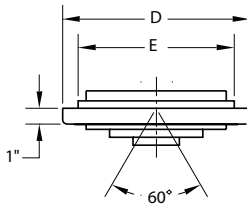


AIR NOZZLE - ROUND DUCT SERIES



ADJUSTABILITY

- Adjustment of the concentric rings about the pivotal axis through a 60° arch at ± 30°.
- Adjustment of the nozzle element about a fixed plane through a 360° rotation.

INSTALLATION

- Easily installs over the end of exposed spiral pipe for a clean & secure fit.

MODEL	E (NOZZLE)	RINGS PER NOZZLE	D (DUCT)
ANC-04-RD	4	3	6
ANC-05-RD	5	3	6
ANC-06-RD	6	3	8
ANC-08-RD	8	3	10
ANC-10-RD	10	3	12
ANC-12-RD	12	3	14
ANC-14-RD	14	4	16
ANC-16-RD	16	4	18
ANC-18-RD	18	4	20
ANC-20-RD	20	5	22
ANC-22-RD	22	5	24
ANC-24-RD	24	5	26

(Inches measured to the nearest 1/16")

STANDARD MATERIAL

- Heavy Gauge Steel

OPTIONAL MATERIAL

- Heavy Gauge Aluminum
- Stainless Steel #304
- Stainless Steel #316

NOTES

- Mounting Screws Included
- Custom Sizes Available

STANDARD FINISHES

- #00 mill (aluminum)
- #10 clear anodized (aluminum)
- #12 anodized powder coat
- #42 gloss black powder coat
- #43 flat black powder coat
- #52 white powder coat
- #62 grey primer powder coat (on field painting)
- #72 silver metallic powder coat
- #99 custom color / color match (paint chip needed)

PROJECT :

ARCHITECT :

ENGINEER :

CONTRACTOR :

SUBMITTED BY :

DATE :

ANC-RD SERIES

AIR NOZZLE - ROUND DUCT MOUNT

FORM # : 30011S

DRAWN BY : MH JANUARY 2002