

### ANC/ADV Series

#### Performance values for various deflection angles

Deflection Angle	Total Pressure	Noise Criteria	Throw (Projection)
0	1.1	+2	1.0
20	1.1	+2	0.9
40	1.2	+3	0.8
60	1.4	+4	0.7
80	1.6	+6	0.6
100	2.0	+8	0.5

Total Pressure, Noise Criteria and Throw factor increases are based on standard ANC data tables.

### Reversible Air Pattern

#### Example:

Model: ANC/ADV-10-1

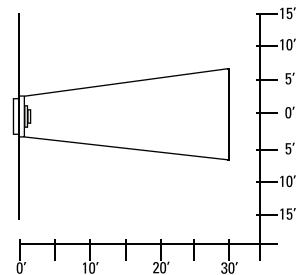
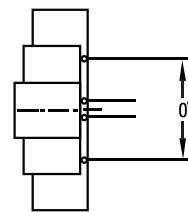
CFM = 500

The ADV Blades set to a 0° Degree deflection jet pattern

Projection = 30ft. @ 100 fpm terminal velocity

Pressure Required = 0.092 "W.G.

Noise Criteria = <20 NC

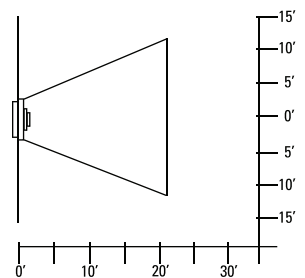
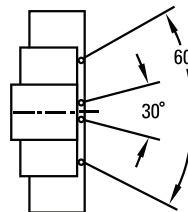


The ADV Blades set to a 60° Degree deflection spread pattern

Projection = 21ft. @ 100 fpm terminal velocity

Pressure Required = 0.128 "W.G.

Noise Criteria = <24 NC



The ADV Blades set to a 100° Degree deflection spread pattern

Projection = 15ft. @ 100 fpm terminal velocity

Pressure Required = 0.184 "W.G.

Noise Criteria = <28 NC

